

D.3 Shape of Diacritics

D.3.1 Caron (Above) vs. Breve

Code Points Considered:

| Code Point | Glyph | Unicode Name |
|------------|-------|-----------------------------------|
| 0103 | ă | LATIN SMALL LETTER A WITH BREVE |
| 011F | ġ | LATIN SMALL LETTER G WITH BREVE |
| 016D | ŭ | LATIN SMALL LETTER U WITH BREVE |
| 010D | č | LATIN SMALL LETTER C WITH CARON |
| 011B | ě | LATIN SMALL LETTER E WITH CARON |
| 0115 | ĕ | LATIN SMALL LETTER E WITH BREVE |
| 0148 | ň | LATIN SMALL LETTER N WITH CARON |
| 0159 | ř | LATIN SMALL LETTER R WITH CARON |
| 0161 | š | LATIN SMALL LETTER S WITH CARON |
| 017E | ž | LATIN SMALL LETTER Z WITH CARON |
| 01CE | ǎ | LATIN SMALL LETTER A WITH CARON |
| 01D0 | ǐ | LATIN SMALL LETTER I WITH CARON |
| 01D2 | ǒ | LATIN SMALL LETTER O WITH CARON |
| 01D4 | ǔ | LATIN SMALL LETTER U WITH CARON |
| 01E7 | ĝ | LATIN SMALL LETTER G WITH CARON |
| 01E9 | ķ | LATIN SMALL LETTER K WITH CARON |
| 01EF | ž | LATIN SMALL LETTER EZH WITH CARON |

Sequence ăă (0103 01CE) compared using Google Fonts in <https://wordmark.it/>:

[illegible]

Sequence ġġ (011F 01E7) compared using Google Fonts in <https://wordmark.it/>:

Sequence ů ů (016D 01D4) compared using Google Fonts in <https://wordmark.it/>:

| | | | | | | | | | | | |
|--------------------------|-----------------------|-------------------------|------------------------------|----------------------------|---------------------------------|-----------------------|----------------------------|----------------------------|------------------------|----------------|----------------------|
| ••• ůů | ůů | ůů | ůů | ůů | ůů | ůů | ůů | ůů | ůů | ůů | ůů |
| Adellea Regular | Adellea Thin | Afar Regular | Almasy Libre Regular | Almasy Libre Medium | Almasy Libre Semi-Bold | Almasy Libre Bold | Almasy Libre Extra-Bold | Alti Fatima Regular | Almasy Regular | Azura Regular | Azura Regular |
| ůů | ůů | ůů | ůů | ůů | ůů | ůů | ůů | ůů | ůů | ůů | ůů |
| Almasy Regular | Almasy Pro Thin | Almasy Pro Extra Light | Almasy Pro Light | Almasy Pro Regular | Almasy Pro Medium | Almasy Pro Semi-Bold | Almasy Pro Bold | Aquatica Script Regular | Almasy Regular | Azura Regular | Almasy Regular |
| ůů | ůů | ůů | ůů | ůů | ůů | ůů | ůů | ůů | ůů | ůů | ůů |
| Afar Regular | Afar Bold | Almasy Regular | Almasy Thin | Almasy Medium | Almasy Medium Thin | Almasy Bold | Almasy Semi Bold | Almasy Extra Bold | Almasy Extra Bold Thin | Almasy Black | Almasy Black Thin |
| ůů | ůů | ůů | ůů | ůů | ůů | ůů | ůů | ůů | ůů | ůů | ůů |
| Almasy SC Regular | Almasy SC Thin | Almasy SC Medium | Almasy SC Medium Thin | Almasy SC Bold | Almasy SC Bold Thin | Almasy SC Extra Bold | Almasy SC Extra Bold Thin | Almasy SC Black | Almasy SC Black Thin | ůů | ůů |
| ůů | ůů | ůů | ůů | ůů | ůů | ůů | ůů | ůů | ůů | ůů | ůů |
| Almasy Thin | Almasy Bold | Almasy Bold Thin | Almasy Regular | Almasy Regular | Almasy Regular | Almasy Thin | Almasy Bold | Almasy Bold Thin | Almasy Regular | Almasy Regular | Almasy Thin |
| ůů | ůů | ůů | ůů | ůů | ůů | ůů | ůů | ůů | ůů | ůů | ůů |
| Almasy Bold | Almasy Bold Thin | Almasy Regular | Almasy Bold | Almasy Regular | Almasy Thin | Almasy Medium | Almasy Medium Thin | Almasy Bold | Almasy Semi Bold | Almasy Bold | Almasy Bold Thin |
| ůů | ůů | ůů | ůů | ůů | ůů | ůů | ůů | ůů | ůů | ůů | ůů |
| Almasy Condensed Regular | Almasy Condensed Thin | Almasy Condensed Medium | Almasy Condensed Medium Thin | Almasy Condensed Semi-Bold | Almasy Condensed Semi-Bold Thin | Almasy Condensed Bold | Almasy Condensed Bold Thin | Almasy Condensed Bold Thin | Afar Regular | Afar Regular | Afarward Extra Light |

Findings:

The representations of the Breve and the Caron in Letters A, G and U are distinguishable and undistinguishable in a number of fonts (see pictures above); depending on the font and size.

The following are considered

ǎ 0103 A WITH BREVE <-> ǎ 01CE A WITH CARON
 ě 0115 E WITH BREVE <-> ě 011B E WITH CARON
 ů 016D U WITH BREVE <-> ů 01D4 U WITH CARON
 ě 011F G WITH BREVE <-> ě 01E7 G WITH CARON

However, the GP revised the repertoire and excluded the code point 01CE, 011B, 01D4 from the repertoire. Therefore, only ě 011F G WITH BREVE <-> ě 01E7 G WITH CARON are variants.

Conclusions:

The following code points are variants:

ě 011F G WITH BREVE <-> ě 01E7 G WITH CARON

D.3.2 Tilde vs. Macron (Above)

Code Points Considered:

| Code Point | Glyph | Unicode Name |
|-------------|-------|---|
| 0067 + 0303 | ğ | LATIN SMALL LETTER G + COMBINING TILDE |
| 006E + 0304 | ñ | LATIN SMALL LETTER N + COMBINING MACRON |
| 0072 + 0303 | ř | LATIN SMALL LETTER R WITH TILDE |
| 00E3 | ã | LATIN SMALL LETTER A WITH TILDE |
| 00F1 | ñ | LATIN SMALL LETTER N WITH TILDE |
| 00F5 | õ | LATIN SMALL LETTER O WITH TILDE |
| 0101 | ā | LATIN SMALL LETTER A WITH MACRON |
| 0113 | ē | LATIN SMALL LETTER E WITH MACRON |
| 0129 | ĩ | LATIN SMALL LETTER I WITH TILDE |
| 012B | ī | LATIN SMALL LETTER I WITH MACRON |
| 014D | ō | LATIN SMALL LETTER O WITH MACRON |
| 0169 | ũ | LATIN SMALL LETTER U WITH TILDE |
| 016B | ū | LATIN SMALL LETTER U WITH MACRON |
| 1E21 | ġ | LATIN SMALL LETTER G WITH MACRON |
| 1EBD | ě | LATIN SMALL LETTER E WITH TILDE |
| 1EF9 | ÿ | LATIN SMALL LETTER Y WITH TILDE |

Sequence ãā (00E3 0101) compared using Google Fonts in <https://wordmark.it/>:

| | | | | | | |
|--|---|-----------------------------------|--|---------------------------------------|-------------------------------------|-------------------------------------|
| ã ā Alegreya Sans Extra-Bold | ã ā Alegreya Sans Extra-Bold Italic | ã ā Alegreya Sans Black | ã ā Alegreya Sans Black Italic | Ã Ã Alegreya Sans SC Thin | Ã Ã Alegreya Sans SC Thin Italic | Ã Ã Alegreya Sans SC Light |
| Ã Ã Alegreya Sans SC Light Italic | Ã Ã Alegreya Sans SC Regular | Ã Ã Alegreya Sans SC Italic | Ã Ã Alegreya Sans SC Medium | Ã Ã Alegreya Sans SC Medium Italic | Ã Ã Alegreya Sans SC Bold | Ã Ã Alegreya Sans SC Bold Italic |
| Ã Ã Alegreya Sans SC Extra-Bold | Ã Ã Alegreya Sans SC Extra-Bold Italic | Ã Ã Alegreya Sans SC Black | Ã Ã Alegreya Sans SC Black Italic | ã ā Alex Brush Regular | ã ā Alfa Slab One Regular | ã ā Alice Regular |
| ã ā Alike Regular | ã ā Alike Angular Regular | ã ā Allan Regular | ã ā Allan Bold | ã ā Allerta Regular | ã ā Allerta Stencil Regular | ã ā Allura Regular |

Findings:

Macron and Tilde are not distinguishable for the viewed fonts.

Sequence ěě (0113 1EBD) compared using Google Fonts in <https://wordmark.it/>:

| | | | | | | |
|--------------------------------|------------------------------|---------------------------|--------------------------|-----------------------------|-------------------------|--------------------------------|
| ě ě Abhaya Libre Extra-Bold | ě ě Abril Fatface Regular | ě ě Adonica Regular | ě ě Acme Regular | ě ě Actor Regular | ě ě Adamina Regular | ě ě Advent Pro Thin |
| ě ě Advent Pro Extra Light | ě ě Advent Pro Light | ě ě Advent Pro Regular | ě ě Advent Pro Medium | ě ě Advent Pro Semi-Bold | ě ě Advent Pro Bold | ě ě Aquaflua Script Regular |
| ě ě Akronim Regular | ě ě Aladin Regular | ě ě Aldrich Regular | ě ě Alif Regular | ě ě Alif Bold | ě ě Alegreya Regular | ě ě Alegreya Italic |
| ě ě | ě ě | ě ě | ě ě | ě ě | ě ě | ě ě |

Findings:

Macron and Tilde are not distinguishable for the viewed fonts.

Sequence ģģ (0067+0303 1E21) compared using Google Fonts in <https://wordmark.it/>:

| | | | | | | |
|--|--|---|--|---|---|--|
|  Antic Slab Regular |  Anton Regular |  Arapey Regular |  Arapey Italic |  Arbutus Regular |  Arbutus Slab Regular |  Architects Daughter Regular |
|  Archivo Regular |  Archivo Italic |  Archivo Medium |  Archivo Medium Italic |  Archivo Semi-Bold |  Archivo Semi-Bold Italic |  Archivo Bold |
|  Archivo Bold Italic |  Archivo Black Regular |  Archivo Narrow Regular |  Archivo Narrow Italic |  Archivo Narrow Medium |  Archivo Narrow Medium Italic |  Archivo Narrow Semi-Bold |
|  |  |  |  |  |  |  |

Findings:

Macron and Tilde are not distinguishable for the viewed fonts.

Sequence ïï (0129 012B) compared using Google Fonts in <https://wordmark.it/>:

| | | | | | | |
|--|---|--|--|---|---|---|
|  Alegreya Sans SC Light Italic |  Alegreya Sans SC Regular |  Alegreya Sans SC Italic |  Alegreya Sans SC Medium |  Alegreya Sans SC Medium Italic |  Alegreya Sans SC Bold |  Alegreya Sans SC Bold Italic |
|  Alegreya Sans SC Extra-Bold |  Alegreya Sans SC Extra-Bold Italic |  Alegreya Sans SC Black |  Alegreya Sans SC Black Italic |  Alex Brush Regular |  Alfa Slab One Regular |  Alice Regular |
|  Alike Regular |  Alike Angular Regular |  Allan Regular |  Allan Bold |  Alerta Regular |  Alerta Stencil Regular |  Alura Regular |
|  |  |  |  |  |  |  |

Findings:

Macron and Tilde are not distinguishable for the viewed fonts.

Sequence ññ (006E+0304 00F1) compared using Google Fonts in <https://wordmark.it/>:

| | | | | | | |
|------------------|-----------------|-----------------|----------------------|-------------------|----------------|----------------------------------|
| n̄ ñ | <u>n̄ ñ</u> | n̄ ñ | n̄ ñ | N̄ Ñ | N̄ Ñ | n̄ ñ |
| Amaranth Regular | Amaranth Italic | Amaranth Bold | Amaranth Bold Italic | Amatic SC Regular | Amatic SC Bold | Amethysta Regular |
| n̄ ñ | n̄ ñ | n̄ ñ | n̄ ñ | n̄ ñ | n̄ ñ | n̄ ñ |
| Amiko Regular | Amiko Semi-Bold | Amiko Bold | Amini Regular | Amini Italic | Amini Bold | Amini Bold Italic |
| n̄ ñ | n̄ ñ | n̄ ñ | n̄ ñ | n̄ ñ | n̄ ñ | n̄ ñ |
| Amita Regular | Amita Bold | Anaheim Regular | Andada Regular | Andika Regular | Angkor Regular | Annie Use Your Telescope Regular |
| n̄ ñ | n̄ ñ | n̄ ñ | n̄ ñ | n̄ ñ | n̄ ñ | n̄ ñ |

Findings:

Macron and Tilde are not distinguishable for the viewed fonts.

Sequence õõ (00F5 014D) compared using Google Fonts in <https://wordmark.it/>:

| | | | | | | |
|-----------------------|------------------------------|--------------------------|---------------------------------|---------------------|----------------------------|-----------------------|
| õ õ | õ õ | õ õ | õ õ | õ õ | õ õ | õ õ |
| Arvo Bold | Arvo Bold Italic | Arya Regular | Arya Bold | Asap Regular | Asap Italic | Asap Medium |
| õ õ | õ õ | õ õ | õ õ | õ õ | õ õ | õ õ |
| Asap Medium Italic | Asap Semi-Bold | Asap Semi-Bold Italic | Asap Bold | Asap Bold Italic | Asap Condensed Regular | Asap Condensed Italic |
| õ õ | õ õ | õ õ | õ õ | õ õ | õ õ | õ õ |
| Asap Condensed Medium | Asap Condensed Medium Italic | Asap Condensed Semi-Bold | Asap Condensed Semi-Bold Italic | Asap Condensed Bold | Asap Condensed Bold Italic | Asar Regular |
| õ õ | õ õ | õ õ | õ õ | õ õ | õ õ | õ õ |

Findings:

Macron and Tilde are **not** distinguishable for the viewed fonts.

Sequence ũũ (0169 016B) compared using Google Fonts in <https://wordmark.it/>:

| | | | | | | |
|---------------------|------------------|--------------|---------------------|-------------------|-----------------|----------------|
| ũ ũ | ũ ũ | ũ ũ | ũ ũ | ũ ũ | ũ ũ | ũ ũ |
| Arima Madurai Black | Arima Regular | Arima Italic | Arima Bold | Arima Bold Italic | Antonia Regular | Armata Regular |
| ũ ũ | ũ ũ | ũ ũ | ũ ũ | ũ ũ | ũ ũ | ũ ũ |
| Arsenal Regular | Arsenal Italic | Arsenal Bold | Arsenal Bold Italic | Artika Regular | Arvo Regular | Arvo Italic |
| ũ ũ | ũ ũ | ũ ũ | ũ ũ | ũ ũ | ũ ũ | ũ ũ |
| Arvo Bold | Arvo Bold Italic | Arya Regular | Arya Bold | Asap Regular | Asap Italic | Asap Medium |
| ũ ũ | ũ ũ | ũ ũ | ũ ũ | ũ ũ | ũ ũ | ũ ũ |

Findings:

Macron and Tilde are not distinguishable for the viewed fonts.

Conclusions:

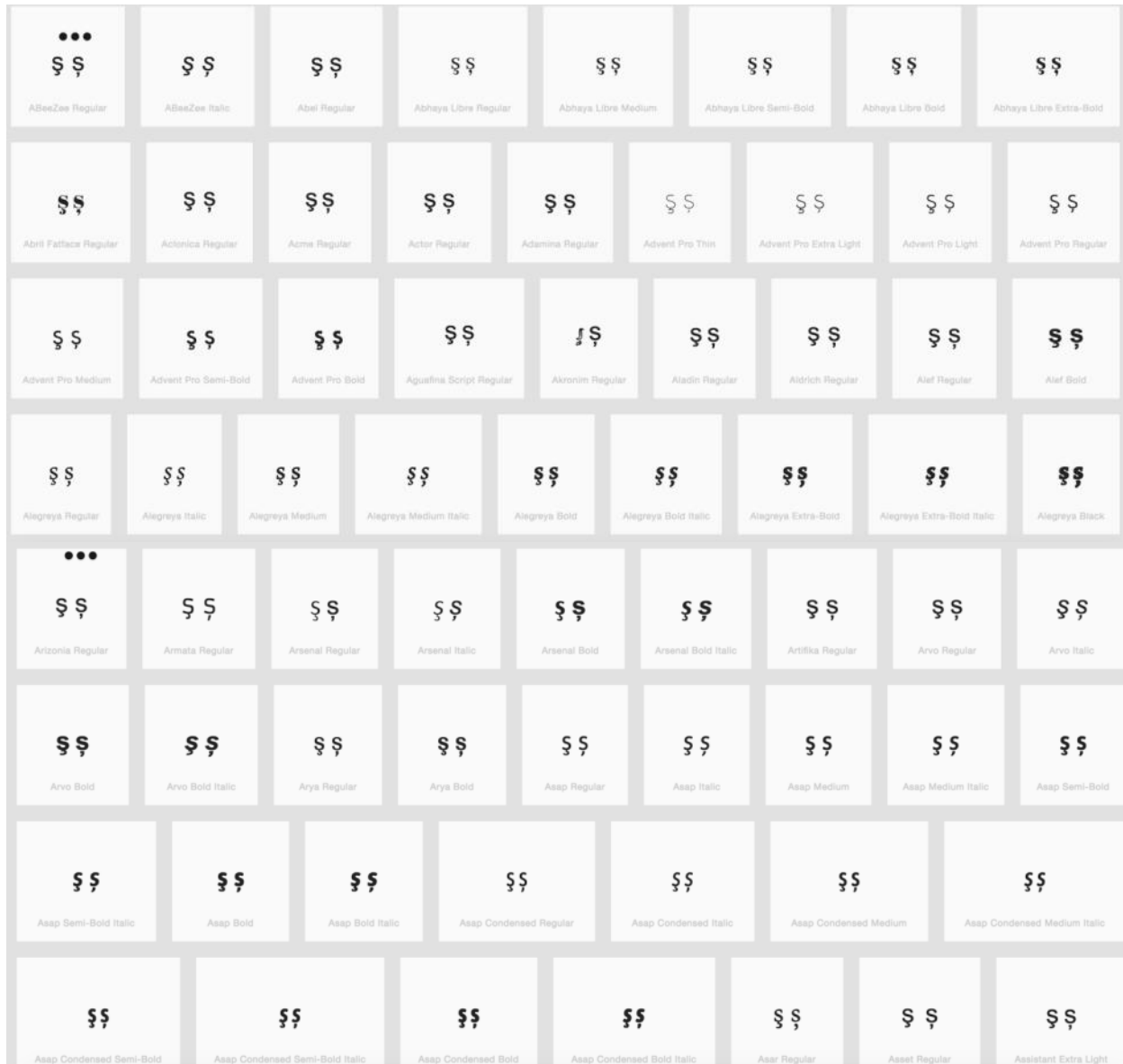
Following letters with Tilde and Macron are variants: a, e, i, o, u, g, and n.

D.3.3 Combining Cedilla (Below), Ogonek and Comma Below

Code Points Considered:

| Code Point | Glyph | Unicode Name |
|-------------|-------|--|
| 006D + 0327 | ṁ | LATIN SMALL LETTER M + COMBINING CEDILLA |
| 006F + 0327 | ṡ | LATIN SMALL LETTER O + COMBINING CEDILLA |
| 00E7 | ç | LATIN SMALL LETTER C WITH CEDILLA |
| 0105 | ą | LATIN SMALL LETTER A WITH OGONEK |
| 0119 | ę | LATIN SMALL LETTER E WITH OGONEK |
| 012F | į | LATIN SMALL LETTER I WITH OGONEK |
| 0137 | ķ | LATIN SMALL LETTER K WITH CEDILLA |
| 013C | ļ | LATIN SMALL LETTER L WITH CEDILLA |
| 0146 | ņ | LATIN SMALL LETTER N WITH CEDILLA |
| 015F | ș | LATIN SMALL LETTER S WITH CEDILLA |
| 0173 | ų | LATIN SMALL LETTER U WITH OGONEK |
| 0219 | ș | LATIN SMALL LETTER S WITH COMMA BELOW |
| 021B | ț | LATIN SMALL LETTER T WITH COMMA BELOW |

Sequence §§ (015F 0219) compared using Google Fonts in <https://wordmark.it/>:



Findings:

The representations of the Cedilla and the Comma Below in Letter S are distinguishable in a number of fonts (see pictures above); in a large number of fonts, the two diacritics are consistently different. No other point base character (except for Letter S) uses two different diacritics (i.e., Letter M only exists with a Combining Cedilla, but not with Ogonek or Comma Below).

Conclusions:

These are not variants.

D.3.4 Ring Above vs. Dot Above

Ring above and Dot above may be considered the same by readers and writers since they are in free variation in handwriting.

Code Points Considered:

| Code Point | Glyph | Unicode Name |
|------------|-------|--------------------------------------|
| 00E5 | å | LATIN SMALL LETTER A WITH RING ABOVE |
| 016F | ŭ | LATIN SMALL LETTER U WITH RING ABOVE |
| 017C | ž | LATIN SMALL LETTER Z WITH DOT ABOVE |
| 010B | ċ | LATIN SMALL LETTER C WITH DOT ABOVE |
| 0117 | ė | LATIN SMALL LETTER E WITH DOT ABOVE |
| 0121 | ġ | LATIN SMALL LETTER G WITH DOT ABOVE |
| 1E45 | ñ | LATIN SMALL LETTER N WITH DOT ABOVE |

Findings:

No eligible candidates because of these two diacritics do not occur with the same base letters.

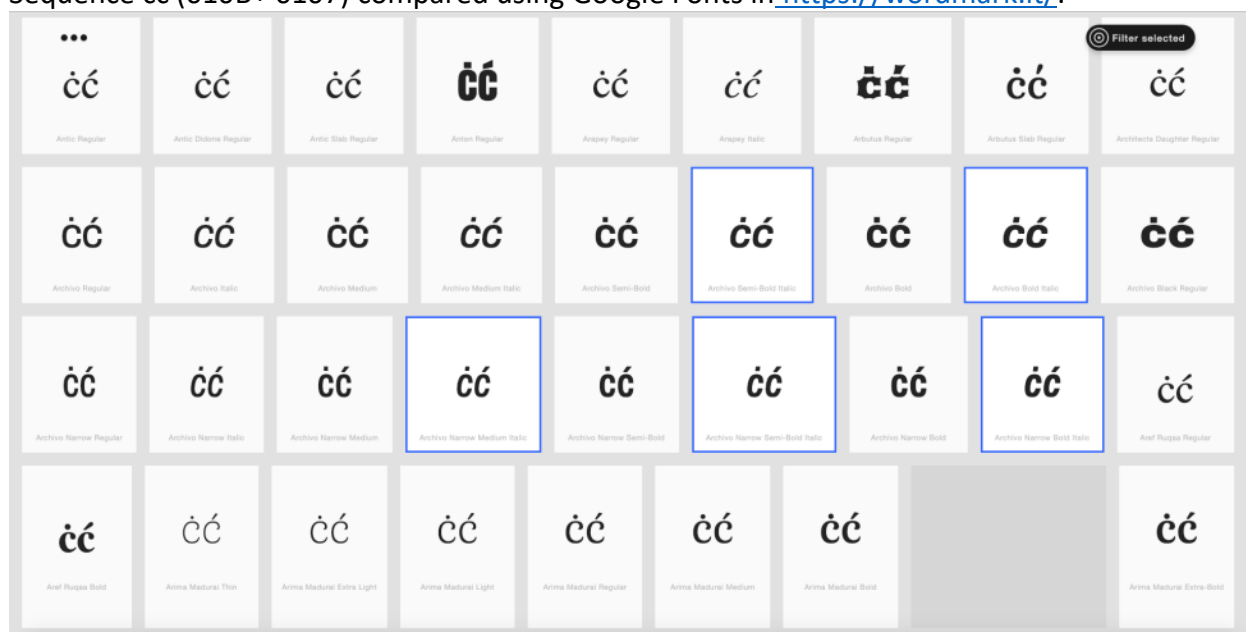
D.3.5 Acute vs. Dot Above

Code Points Considered:

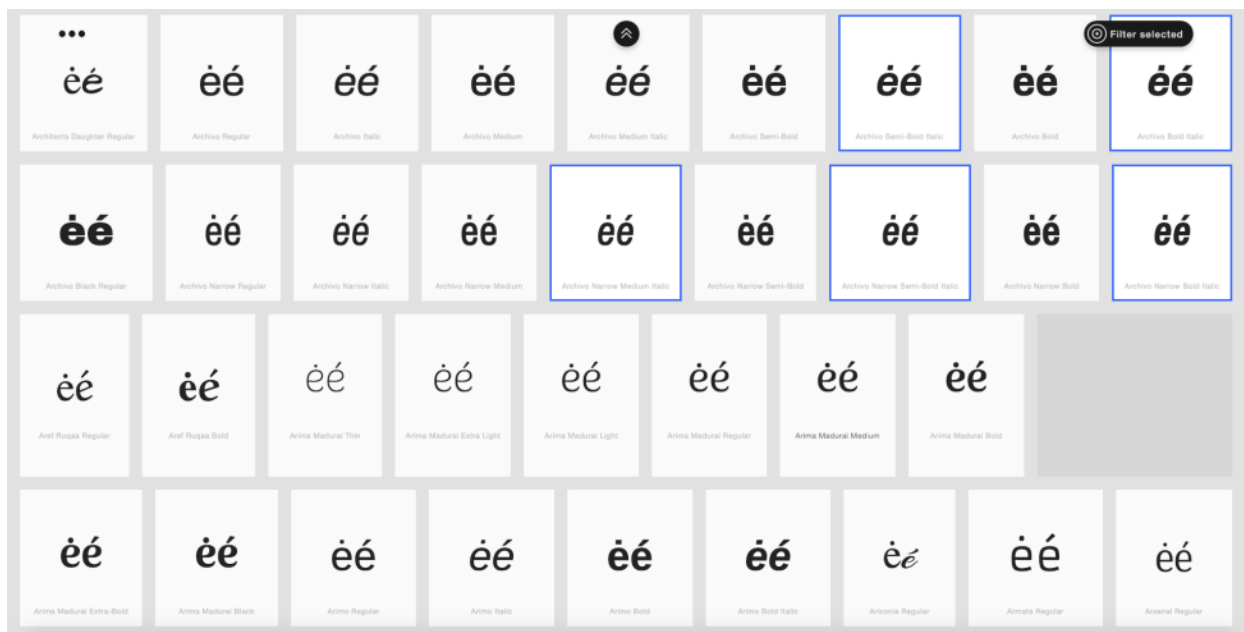
| Code Point | Glyph | Unicode Name |
|------------|-------|---------------------------------|
| 0069 | ı | LATIN SMALL LETTER I |
| 00E1 | á | LATIN SMALL LETTER A WITH ACUTE |
| 00E9 | é | LATIN SMALL LETTER E WITH ACUTE |
| 00ED | í | LATIN SMALL LETTER I WITH ACUTE |
| 00F3 | ó | LATIN SMALL LETTER O WITH ACUTE |
| 00FA | ú | LATIN SMALL LETTER U WITH ACUTE |
| 00FD | ý | LATIN SMALL LETTER Y WITH ACUTE |
| 0107 | ć | LATIN SMALL LETTER C WITH ACUTE |

| | | |
|------|---|--|
| 013A | í | LATIN SMALL LETTER L WITH ACUTE |
| 0144 | ñ | LATIN SMALL LETTER LATIN SMALL LETTER N WITH ACUTE |
| 0155 | ř | LATIN SMALL LETTER R WITH ACUTE |
| 015B | ś | LATIN SMALL LETTER S WITH ACUTE |
| 017A | ž | LATIN SMALL LETTER Z WITH ACUTE |
| 010B | č | LATIN SMALL LETTER C WITH DOT ABOVE |
| 0117 | è | LATIN SMALL LETTER E WITH DOT ABOVE |
| 0121 | ġ | LATIN SMALL LETTER G WITH DOT ABOVE |
| 017C | ž | LATIN SMALL LETTER Z WITH DOT ABOVE |
| 1E45 | ň | LATIN SMALL LETTER N WITH DOT ABOVE |

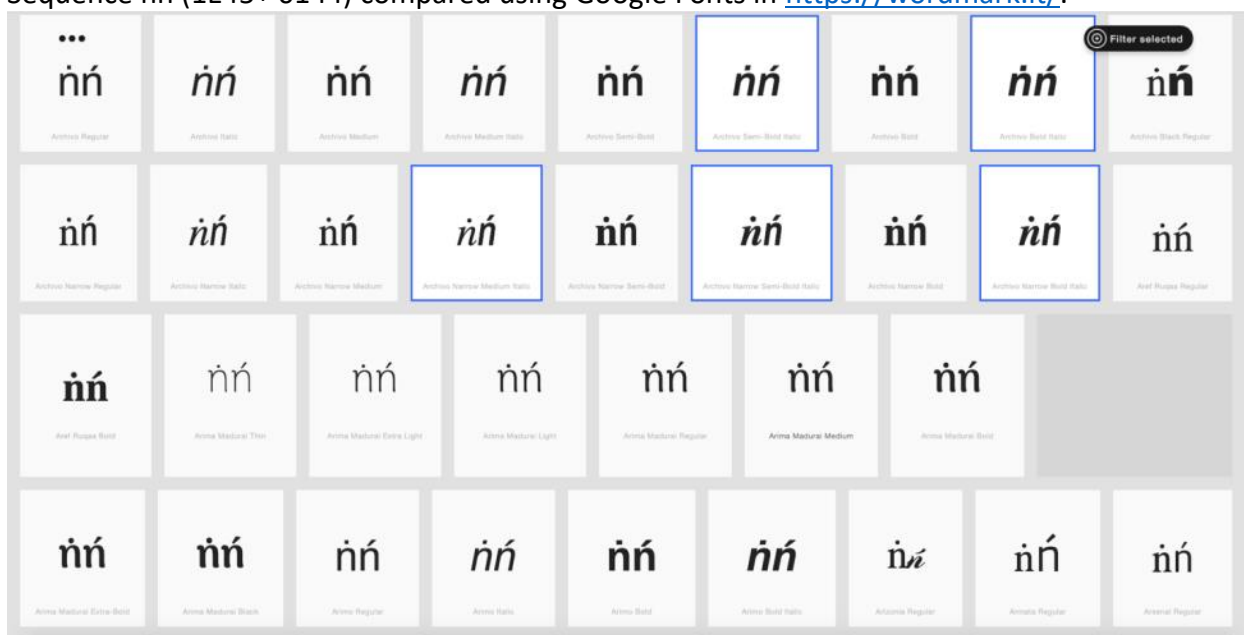
Sequence čć (010B+ 0107) compared using Google Fonts in <https://wordmark.it/>:



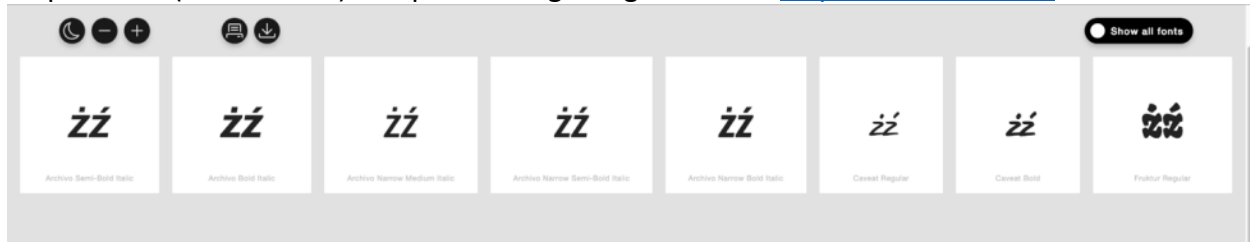
Sequence éé (0117 + 00E9) compared using Google Fonts in <https://wordmark.it/>:



Sequence ññ (1E45+ 0144) compared using Google Fonts in <https://wordmark.it/>:



Sequence žž (017C+ 017A) compared using Google Fonts in <https://wordmark.it/>:



Findings:

ćć, ññ, and žž were considered as variant pairs. The representations of the acute and the dot above in these pairs are not distinguishable in a number of fonts.

Conclusion:

These letter with Acute and Dot Above are variants: c, n, and z.

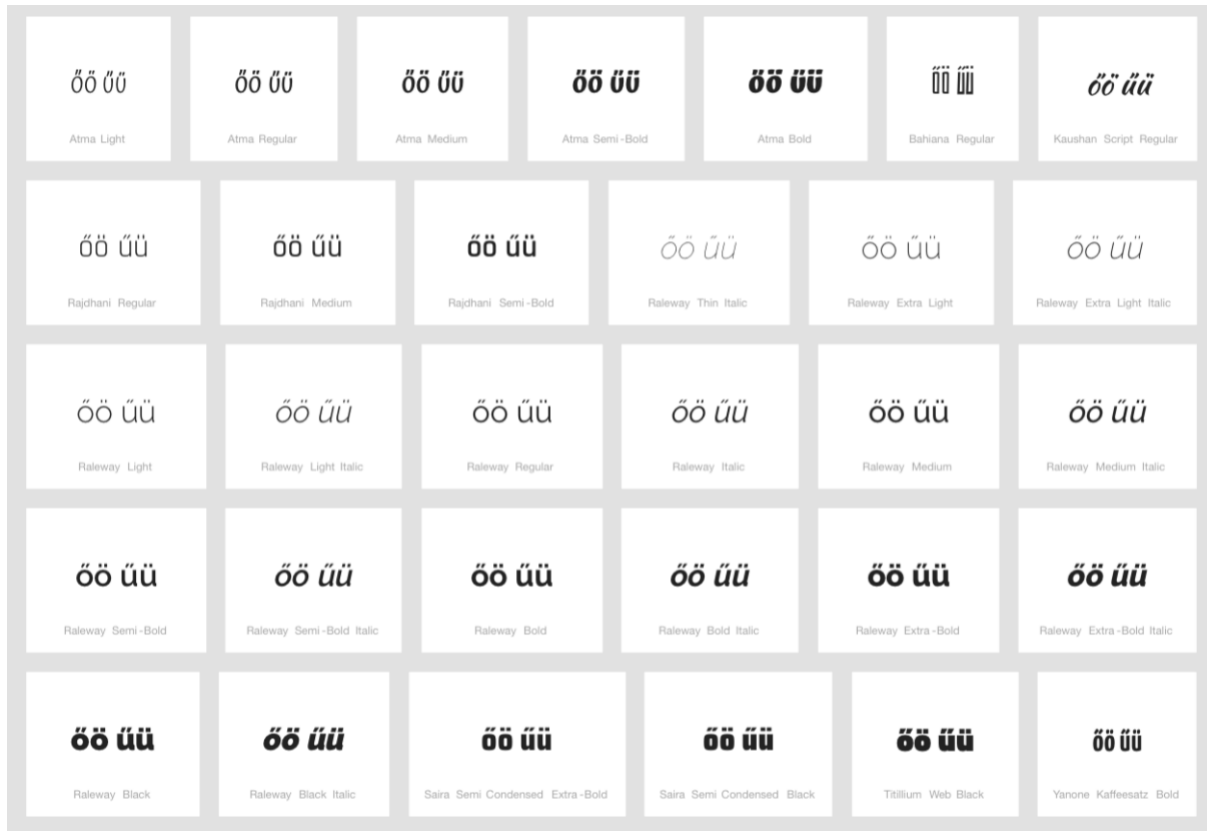
D.3.6 Grave vs. Dot Above

Code Points Considered:

| Code Points | Glyph | Unicode Name |
|-------------|-------|-------------------------------------|
| 00E8 | è | LATIN SMALL LETTER E WITH GRAVE |
| 00EC | ì | LATIN SMALL LETTER I WITH GRAVE |
| 00F2 | ò | LATIN SMALL LETTER O WITH GRAVE |
| 00F9 | ù | LATIN SMALL LETTER U WITH GRAVE |
| 1EF3 | ỳ | LATIN SMALL LETTER Y WITH GRAVE |
| 010B | ċ | LATIN SMALL LETTER C WITH DOT ABOVE |
| 0117 | ė | LATIN SMALL LETTER E WITH DOT ABOVE |
| 0121 | ġ | LATIN SMALL LETTER G WITH DOT ABOVE |
| 017C | ž | LATIN SMALL LETTER Z WITH DOT ABOVE |
| 1E45 | ñ | LATIN SMALL LETTER N WITH DOT ABOVE |

Sequence èè (00E8 + 0117) compared using Google Fonts in <https://wordmark.it/> :

Sequence öö and üü (00F6 0151 and 00FC 0171) compared using Google Fonts in <https://wordmark.it/>:



Findings:

The representations of the Double Acute vs Diaeresis in these pairs are distinguishable in a number of fonts. In some fonts, the two diacritics look similar.

Conclusion:

Code points ő and ü are not variants. They should be investigated for visual similarity.

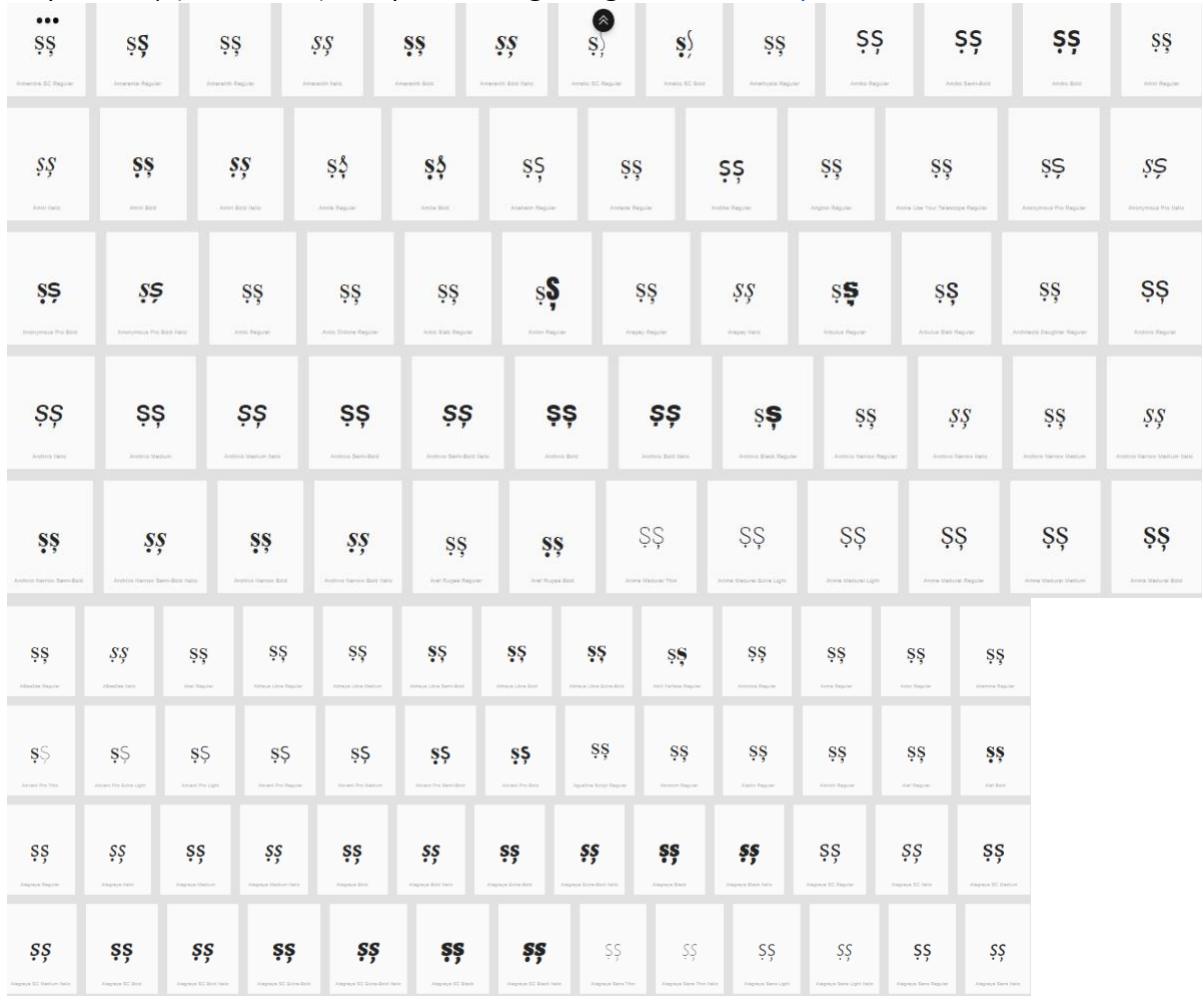
D.3.8 Dot Below vs. Comma Below

Code Points Considered:

| Code Point | Glyph | Unicode Name |
|------------|-------|-------------------------------------|
| 1E37 | ł | LATIN SMALL LETTER L WITH DOT BELOW |
| 1E43 | ṃ | LATIN SMALL LETTER M WITH DOT BELOW |
| 1E47 | ṇ | LATIN SMALL LETTER N WITH DOT BELOW |
| 1E63 | ṡ | LATIN SMALL LETTER S WITH DOT BELOW |
| 1E6D | ṭ | LATIN SMALL LETTER T WITH DOT BELOW |
| 1EA1 | ạ | LATIN SMALL LETTER A WITH DOT BELOW |
| 1EB9 | ẹ | LATIN SMALL LETTER E WITH DOT BELOW |
| 1ECB | ị | LATIN SMALL LETTER I WITH DOT BELOW |
| 1ECD | ọ | LATIN SMALL LETTER O WITH DOT BELOW |

| | | |
|------|---|---------------------------------------|
| 1EE5 | ŭ | LATIN SMALL LETTER U WITH DOT BELOW |
| 1EF5 | ŷ | LATIN SMALL LETTER Y WITH DOT BELOW |
| 0219 | ſ | LATIN SMALL LETTER S WITH COMMA BELOW |
| 021B | ţ | LATIN SMALL LETTER T WITH COMMA BELOW |

Sequence ſſ (1E63 0219) compared using Google Fonts in <https://wordmark.it/>:



Sequence ţţ (1E6D 021B) compared using Google Fonts in <https://wordmark.it/>:

| | | | | | | | | | | | | | |
|--|--|--|--|--|--|--|--|--|--|--|--|--|--|
| | | | | | | | | | | | | | |
| | | | | | | | | | | | | | |
| | | | | | | | | | | | | | |
| | | | | | | | | | | | | | |
| | | | | | | | | | | | | | |
| | | | | | | | | | | | | | |
| | | | | | | | | | | | | | |
| | | | | | | | | | | | | | |
| | | | | | | | | | | | | | |

| | | |
|------|---|--------------------------------------|
| 0253 | ḃ | LATIN SMALL LETTER B WITH HOOK |
| 0257 | ḋ | LATIN SMALL LETTER D WITH HOOK |
| 1E45 | ḥ | LATIN SMALL LETTER H WITH DOT ABOVE |
| 1EA3 | Ḃ | LATIN SMALL LETTER A WITH HOOK ABOVE |
| 1EBB | Ḃ | LATIN SMALL LETTER E WITH HOOK ABOVE |
| 1EC9 | Ḃ | LATIN SMALL LETTER I WITH HOOK ABOVE |
| 1ECF | Ḃ | LATIN SMALL LETTER O WITH HOOK ABOVE |
| 1EE7 | Ḃ | LATIN SMALL LETTER U WITH HOOK ABOVE |
| 1EF7 | Ḃ | LATIN SMALL LETTER Y WITH HOOK ABOVE |

Sequence èè (1EBB 0117) compared using Google Fonts in <https://wordmark.it/>:

| | | | | | | |
|---|-------------------------------------|--|--|---|---|--|
| è è <small>Alike Angular Regular</small> | è è <small>Allan Regular</small> | è è <small>Allan Bold</small> | è è <small>Allerta Regular</small> | è è <small>Allerta Stencil Regular</small> | è è <small>Allura Regular</small> | è è <small>Almendra Regular</small> |
| è è <small>Almendra Italic</small> | è è <small>Almendra Bold</small> | è è <small>Almendra Bold Italic</small> | è è <small>Almendra Display Regular</small> | è è <small>Almendra SC Regular</small> | è è <small>Amarante Regular</small> | è è <small>Amaranth Regular</small> |
| è è <small>Amaranth Italic</small> | è è <small>Amaranth Bold</small> | è è <small>Amaranth Bold Italic</small> | è è <small>Amatic SC Regular</small> | è è <small>Amatic SC Bold</small> | è è <small>Amethysta Regular</small> | è è <small>Amiko Regular</small> |
| è è | è è | è è | è è | è è | è è | è è |

Findings:

Dot and Hook are distinguishable for the viewed fonts.

Sequence ii (0069 1EC9) compared using Google Fonts in <https://wordmark.it/>:

| | | | | | | | |
|-----------------------------|-----------------------|------------------------|-----------------------|-----------------------|------------------------------|--------------------------|----------------------|
| | | | | | | | |
| Antic Regular | Antic Didone Regular | Antic Slab Regular | Anton Regular | Arapey Regular | Arapey Italic | Arbutus Regular | Arbutus Slab Regular |
| | | | | | | | |
| Architects Daughter Regular | Archivo Regular | Archivo Italic | Archivo Medium | Archivo Medium Italic | Archivo Semi-Bold | Archivo Semi-Bold Italic | Archivo Bold |
| | | | | | | | |
| Archivo Bold Italic | Archivo Black Regular | Archivo Narrow Regular | Archivo Narrow Italic | Archivo Narrow Medium | Archivo Narrow Medium Italic | Archivo Narrow Semi-Bold | |
| | | | | | | | |

Findings:

Dot and Hook are not distinguishable for the viewed fonts.

Sequence yŷ (01B4 1EF7) compared using Google Fonts in <https://wordmark.it/>:

| | | | | | | |
|------------------|-----------------------|---------------|----------------------|--------------------------|-------------------------|-------------------|
| | | | | | | |
| Alike Regular | Alike Angular Regular | Allan Regular | Allan Bold | Allerta Regular | Allerta Stencil Regular | Allura Regular |
| | | | | | | |
| Almendra Regular | Almendra Italic | Almendra Bold | Almendra Bold Italic | Almendra Display Regular | Almendra SC Regular | Amarante Regular |
| | | | | | | |
| Amaranth Regular | Amaranth Italic | Amaranth Bold | Amaranth Bold Italic | Amatic SC Regular | Amatic SC Bold | Amethysta Regular |
| | | | | | | |

Findings:

Hook and Hook Above are distinguishable for the viewed fonts.

Conclusion:

These code points are variants: Latin Small Letter l (l, 0069) and Latin Small Letter l with Hook Above (ŷ, 1EC9)

D.3.10 Caron vs. Hook

Code Points Considered:

| Code Point | Glyph | Unicode Name |
|------------|-------|---------------------------------|
| 010F | ď | LATIN SMALL LETTER D WITH CARON |
| 0257 | đ | LATIN SMALL LETTER D WITH HOOK |

Sequence ďđ (010F 0257) compared using Google Fonts in <https://wordmark.it/>:

| | | | | | | | | |
|---|---|--|--|---|---|--|--|--|
| <div>•••</div> <div>ďđ</div> <div>ABeeZee Regular</div> | <div>ďđ</div> <div>ABeeZee Italic</div> | <div>ďđ</div> <div>Abel Regular</div> | <div>ďđ</div> <div>Abhaya Libre Regular</div> | <div>ďđ</div> <div>Abhaya Libre Medium</div> | <div>ďđ</div> <div>Abhaya Libre Semi-Bold</div> | <div>ďđ</div> <div>Abhaya Libre Bold</div> | <div>ďđ</div> <div>Abhaya Libre Extra-Bold</div> | |
| <div>ďđ</div> <div>Abril Fatface Regular</div> | <div>ďđ</div> <div>Aclonica Regular</div> | <div>ďđ</div> <div>Acme Regular</div> | <div>ďđ</div> <div>Actor Regular</div> | <div>ďđ</div> <div>Adamina Regular</div> | <div>ďđ</div> <div>Advent Pro Thin</div> | <div>ďđ</div> <div>Advent Pro Extra Light</div> | <div>ďđ</div> <div>Advent Pro Light</div> | <div>ďđ</div> <div>Advent Pro Regular</div> |
| <div>ďđ</div> <div>Advent Pro Medium</div> | <div>ďđ</div> <div>Advent Pro Semi-Bold</div> | <div>ďđ</div> <div>Advent Pro Bold</div> | <div>ďđ</div> <div>Aguafina Script Regular</div> | <div>ďđ</div> <div>Akronim Regular</div> | <div>ďđ</div> <div>Aladin Regular</div> | <div>ďđ</div> <div>Alata Regular</div> | <div>ďđ</div> <div>Alatsi Regular</div> | <div>ďđ</div> <div>Aldrich Regular</div> |
| <div>ďđ</div> <div>Alaf Regular</div> | <div>ďđ</div> <div>Alaf Bold</div> | <div>ďđ</div> <div>Alegreya Regular</div> | <div>ďđ</div> <div>Alegreya Italic</div> | <div>ďđ</div> <div>Alegreya Medium</div> | <div>ďđ</div> <div>Alegreya Medium Italic</div> | <div>ďđ</div> <div>Alegreya Bold</div> | <div>ďđ</div> <div>Alegreya Bold Italic</div> | <div>ďđ</div> <div>Alegreya Extra-Bold</div> |
| <div>ďđ</div> <div>Alegreya Extra-Bold Italic</div> | <div>ďđ</div> <div>Alegreya Black</div> | <div>ďđ</div> <div>Alegreya Black Italic</div> | <div>ďđ</div> <div>Alegreya SC Regular</div> | <div>ďđ</div> <div>Alegreya SC Italic</div> | <div>ďđ</div> <div>Alegreya SC Medium</div> | <div>ďđ</div> <div>Alegreya SC Medium Italic</div> | <div>ďđ</div> <div>Alegreya SC Bold</div> | |
| <div>ďđ</div> <div>Alegreya SC Bold Italic</div> | <div>ďđ</div> <div>Alegreya SC Extra-Bold</div> | <div>ďđ</div> <div>Alegreya SC Extra-Bold Italic</div> | <div>ďđ</div> <div>Alegreya SC Black</div> | <div>ďđ</div> <div>Alegreya SC Black Italic</div> | <div>ďđ</div> <div>Alegreya Sans Thin</div> | <div>ďđ</div> <div>Alegreya Sans Thin Italic</div> | | |

Findings:

Caron and Hook are distinguishable in most fonts viewed

Conclusion:

These code points are not variants.

D.3.11 Caron vs. Horn

Caron and Horn may become nearly identical depending on font, context and reader, and they may be used interchangeably in handwriting.

Code Points Considered:

| Code Point | Glyph | Unicode Name |
|------------|-------|---|
| 01CE | ă | LATIN SMALL LETTER A WITH CARON |
| 010D | č | LATIN SMALL LETTER C WITH CARON |
| 010F | ď | LATIN SMALL LETTER D WITH CARON |
| 011B | ě | LATIN SMALL LETTER E WITH CARON |
| 01E7 | ğ | LATIN SMALL LETTER G WITH CARON |
| 01D0 | ĩ | LATIN SMALL LETTER I WITH CARON |
| 01E9 | ķ | LATIN SMALL LETTER K WITH CARON |
| 013E | ĺ | LATIN SMALL LETTER L WITH CARON |
| 0148 | ň | LATIN SMALL LETTER N WITH CARON |
| 01D2 | ů | LATIN SMALL LETTER O WITH CARON |
| 01A1 | ø | LATIN SMALL LETTER O WITH HORN |
| 1EDB | ó | LATIN SMALL LETTER O WITH HORN AND ACUTE |
| 1EDD | õ | LATIN SMALL LETTER O WITH HORN AND GRAVE |
| 1EE1 | õ | LATIN SMALL LETTER O WITH HORN AND TILDE |
| 1EDF | ǫ | LATIN SMALL LETTER O WITH HORN AND HOOK ABOVE |
| 1EE3 | ø | LATIN SMALL LETTER O WITH HORN AND DOT BELOW |
| 0159 | ř | LATIN SMALL LETTER R WITH CARON |
| 0161 | š | LATIN SMALL LETTER S WITH CARON |
| 0165 | ť | LATIN SMALL LETTER T WITH CARON |
| 01D4 | ů | LATIN SMALL LETTER U WITH CARON |
| 01B0 | ű | LATIN SMALL LETTER U WITH HORN |
| 1EE9 | ú | LATIN SMALL LETTER U WITH HORN AND ACUTE |

| | | |
|------|---|---|
| 1EEB | ù | LATIN SMALL LETTER U WITH HORN AND GRAVE |
| 1EEF | ũ | LATIN SMALL LETTER U WITH HORN AND TILDE |
| 1EED | ǔ | LATIN SMALL LETTER U WITH HORN AND HOOK ABOVE |
| 1EF1 | ұ | LATIN SMALL LETTER U WITH HORN AND DOT BELOW |
| 017E | ž | LATIN SMALL LETTER Z WITH CARON |
| 01EF | ž | LATIN SMALL LETTER EZH WITH CARON |

String (oŃ oŃo oŃo oŃo oŃo oŃo oŃo) compared using Google Fonts in <https://wordmark.it/>

| | | |
|--|---|---|
| oŃo oŃo oŃo oŃo oŃo oŃo oŃo Abhaya Libre Medium | oŃo oŃo oŃo oŃo oŃo oŃo oŃo Abhaya Libre Bold | oŃo oŃo oŃo oŃo oŃo oŃo oŃo Alegreya SC Medium |
| oŃo oŃo oŃo oŃo oŃo oŃo oŃo Arapay Regular | oŃo oŃo oŃo oŃo oŃo oŃo oŃo Averia Libre Bold Italic | |
| oŃo oŃo oŃo oŃo oŃo oŃo oŃo Baskerville Regular | oŃo oŃo oŃo oŃo oŃo oŃo oŃo Chorburli Regular | |
| oŃo oŃo oŃo oŃo oŃo oŃo oŃo Exo Light Italic | oŃo oŃo oŃo oŃo oŃo oŃo oŃo Inconsolata Bold | |
| oŃo oŃo oŃo oŃo oŃo oŃo oŃo Kodchasan Bold | oŃo oŃo oŃo oŃo oŃo oŃo oŃo Lexend Peta Regular | |
| oŃo oŃo oŃo oŃo oŃo oŃo oŃo Miniver Regular | oŃo oŃo oŃo oŃo oŃo oŃo oŃo Overpass Regular | |
| oŃo oŃo oŃo oŃo oŃo oŃo oŃo Philosopher Regular | oŃo oŃo oŃo oŃo oŃo oŃo oŃo Rokkitt Light | oŃo oŃo oŃo oŃo oŃo oŃo oŃo Signika Light |
| oŃo oŃo oŃo oŃo oŃo oŃo oŃo Tajawal Regular | oŃo oŃo oŃo oŃo oŃo oŃo oŃo Zilla Slab Light | |

Findings:

Caron and horn are always in place and distinguishable.

Conclusions:

No variants candidates found.

String (ម៉ឺន មេន ម៉ែន ម៉ែន ម៉ឺន ម៉ែន ម៉ែន) compared using Google Fonts in <https://wordmark.it/>

| | | |
|--|---|---|
| ម៉ឺន មេន ម៉ែន ម៉ែន ម៉ឺន ម៉ែន ម៉ែន <i>Abhaya Libre Regular</i> | ម៉ឺន មេន ម៉ែន ម៉ែន ម៉ឺន ម៉ែន ម៉ែន <i>Alatsi Regular</i> | ម៉ឺន មេន ម៉ែន ម៉ែន ម៉ឺន ម៉ែន ម៉ែន <i>Alegreya Black</i> |
| ម៉ឺន មេន ម៉ែន ម៉ែន ម៉ឺន ម៉ែន ម៉ែន <i>Athiti Light</i> | ម៉ឺន មេន ម៉ែន ម៉ែន ម៉ឺន ម៉ែន ម៉ែន <i>Baloo Thambi Regular</i> | ម៉ឺន មេន ម៉ែន ម៉ែន ម៉ឺន ម៉ែន ម៉ែន <i>Barlow Condensed Black Italic</i> |
| ម៉ឺន មេន ម៉ែន ម៉ែន ម៉ឺន ម៉ែន ម៉ែន <i>Cabin Semi-Bold Italic</i> | ម៉ឺន មេន ម៉ែន ម៉ែន ម៉ឺន ម៉ែន ម៉ែន <i>Cormorant Garamond Light</i> | ម៉ឺន មេន ម៉ែន ម៉ែន ម៉ឺន ម៉ែន ម៉ែន <i>Dekko Regular</i> |
| ម៉ឺន មេន ម៉ែន ម៉ែន ម៉ឺន ម៉ែន ម៉ែន <i>Farsan Regular</i> | ម៉ឺន មេន ម៉ែន ម៉ែន ម៉ឺន ម៉ែន ម៉ែន <i>Faustina Semi-Bold Italic</i> | ម៉ឺន មេន ម៉ែន ម៉ែន ម៉ឺន ម៉ែន ម៉ែន <i>Gelasio Regular</i> |
| ម៉ឺន មេន ម៉ែន ម៉ែន ម៉ឺន ម៉ែន ម៉ែន <i>Halant Regular</i> | ម៉ឺន មេន ម៉ែន ម៉ែន ម៉ឺន ម៉ែន ម៉ែន <i>IBM Plex Mono Medium Italic</i> | |
| ម៉ឺន មេន ម៉ែន ម៉ែន ម៉ឺន ម៉ែន ម៉ែន <i>Josefin Sans Regular</i> | ម៉ឺន មេន ម៉ែន ម៉ែន ម៉ឺន ម៉ែន ម៉ែន <i>Koulen Regular</i> | |
| ម៉ឺន មេន ម៉ែន ម៉ែន ម៉ឺន ម៉ែន ម៉ែន <i>Ledger Regular</i> | ម៉ឺន មេន ម៉ែន ម៉ែន ម៉ឺន ម៉ែន ម៉ែន <i>Mallanna Regular</i> | |
| ម៉ឺន មេន ម៉ែន ម៉ែន ម៉ឺន ម៉ែន ម៉ែន <i>Mitr Regular</i> | ម៉ឺន មេន ម៉ែន ម៉ែន ម៉ឺន ម៉ែន ម៉ែន <i>Nanum Myeongjo Regular</i> | |



Findings:
Caron and horn are always in place and distinguishable.

Conclusions:
No variants candidates found.

D.3.12 Ring Above vs. Hook Above

Code Points Considered:

| Code Point | Glyph | Unicode Name |
|------------|-------|--------------------------------------|
| 1EA3 | á | LATIN SMALL LETTER A WITH HOOK ABOVE |
| 00E5 | å | LATIN SMALL LETTER A WITH RING ABOVE |
| 1EE7 | ú | LATIN SMALL LETTER U WITH HOOK ABOVE |
| 016F | ů | LATIN SMALL LETTER U WITH RING ABOVE |

| | | | | | | | | | |
|------|------|------|------|------|------|------|------|------|------|
| á | á | á | á | á | á | á | á | á | á |
| Font | Font | Font | Font | Font | Font | Font | Font | Font | Font |
| á | á | á | á | á | á | á | á | á | á |
| Font | Font | Font | Font | Font | Font | Font | Font | Font | Font |
| á | á | á | á | á | á | á | á | á | á |
| Font | Font | Font | Font | Font | Font | Font | Font | Font | Font |
| á | á | á | á | á | á | á | á | á | á |
| Font | Font | Font | Font | Font | Font | Font | Font | Font | Font |
| á | á | á | á | á | á | á | á | á | á |
| Font | Font | Font | Font | Font | Font | Font | Font | Font | Font |

Findings
In some fonts, at normal sizes, the two diacritics can be difficult to distinguish.

Sequence åå (00E5 1EA3) compared using Google Fonts in <https://wordmark.it/>:

| | | | | | | | | | |
|--------------------|---------------------------|---------------------------|----------------------------|-------------------------|------------------------|-------------------------------|-----------------------------|--------------------------|----------------------|
| ••• åå | åå | åå | åå | åå | åå | åå | åå | åå | åå |
| ABeeZee Regular | ABeeZee Italic | Abel Regular | Abhaya Libre Regular | Abhaya Libre Medium | Abhaya Libre Semi-Bold | Abhaya Libre Bold | Abhaya Libre Extra-Bold | Abri Fatface Regular | |
| åå | åå | åå | åå | åå | åå | åå | åå | åå | åå |
| Adlonica Regular | Acoma Regular | Acor Regular | Adamina Regular | Advent Pro Thin | Advent Pro Extra Light | Advent Pro Light | Advent Pro Regular | Advent Pro Medium | Advent Pro Semi-Bold |
| åå | åå | åå | åå | åå | åå | åå | åå | åå | åå |
| Advent Pro Bold | Aguafina Script Regular | Akronim Regular | Aladin Regular | Alata Regular | Alatai Regular | Aldrich Regular | Alief Regular | Alief Bold | Alegreya Regular |
| åå | åå | åå | åå | åå | åå | åå | åå | åå | åå |
| Alegreya Italic | Alegreya Medium | Alegreya Medium Italic | Alegreya Bold | Alegreya Bold Italic | Alegreya Extra-Bold | Alegreya Extra-Bold Italic | Alegreya Black | Alegreya Black Italic | Alegreya SC Regular |
| åå | åå | åå | åå | åå | åå | åå | åå | åå | åå |
| Alegreya SC Italic | Alegreya SC Medium | Alegreya SC Medium Italic | Alegreya SC Bold | Alegreya SC Bold Italic | Alegreya SC Extra-Bold | Alegreya SC Extra-Bold Italic | Alegreya SC Black | Alegreya SC Black Italic | |
| åå | åå | åå | åå | åå | åå | åå | åå | åå | åå |
| Alegreya Sans Thin | Alegreya Sans Thin Italic | Alegreya Sans Light | Alegreya Sans Light Italic | Alegreya Sans Regular | Alegreya Sans Italic | Alegreya Sans Medium | Alegreya Sans Medium Italic | Alegreya Sans Bold | |

Sequence ûû (016F 1EE7) compared using Google Fonts in <https://wordmark.it/>:

| | | | | | | | | | |
|--------------------------|-------------------------|---------------------------|---------------------------|----------------------------|-------------------------|----------------------------|-------------------------------|-----------------------|----------------------|
| ••• ûû | ûû | ûû | ûû | ûû | ûû | ûû | ûû | ûû | ûû |
| ABeeZee Regular | ABeeZee Italic | Abel Regular | Abhaya Libre Regular | Abhaya Libre Medium | Abhaya Libre Semi-Bold | Abhaya Libre Bold | Abhaya Libre Extra-Bold | Abri Fatface Regular | |
| ûû | ûû | ûû | ûû | ûû | ûû | ûû | ûû | ûû | ûû |
| Adlonica Regular | Acoma Regular | Acor Regular | Adamina Regular | Advent Pro Thin | Advent Pro Extra Light | Advent Pro Light | Advent Pro Regular | Advent Pro Medium | Advent Pro Semi-Bold |
| ûû | ûû | ûû | ûû | ûû | ûû | ûû | ûû | ûû | ûû |
| Advent Pro Bold | Aguafina Script Regular | Akronim Regular | Aladin Regular | Alata Regular | Alatai Regular | Aldrich Regular | Alief Regular | Alief Bold | Alegreya Regular |
| ûû | ûû | ûû | ûû | ûû | ûû | ûû | ûû | ûû | ûû |
| Alegreya Italic | Alegreya Medium | Alegreya Medium Italic | Alegreya Bold | Alegreya Bold Italic | Alegreya Extra-Bold | Alegreya Extra-Bold Italic | Alegreya Black | Alegreya Black Italic | |
| ûû | ûû | ûû | ûû | ûû | ûû | ûû | ûû | ûû | ûû |
| Alegreya SC Regular | Alegreya SC Italic | Alegreya SC Medium | Alegreya SC Medium Italic | Alegreya SC Bold | Alegreya SC Bold Italic | Alegreya SC Extra-Bold | Alegreya SC Extra-Bold Italic | Alegreya SC Black | |
| ûû | ûû | ûû | ûû | ûû | ûû | ûû | ûû | ûû | ûû |
| Alegreya SC Black Italic | Alegreya Sans Thin | Alegreya Sans Thin Italic | Alegreya Sans Light | Alegreya Sans Light Italic | Alegreya Sans Regular | Alegreya Sans Italic | Alegreya Sans Medium | | |

Findings:

Ring above and Hook above are distinguishable in all fonts viewed.

Conclusions:

This code points are not variants.

D.3.13 Visual Variant Analysis

D.3.13.1 Consonants

| Unicode Code Point | Name | Glyph | Glyph | Unicode Code Point | Name | Inspectors | | | | | | | # Final |
|-----------------------|---|-------|-------|-----------------------|--|------------|----|----|----|----|----|----|----------------|
| | | | | | | MT | DT | BJ | HH | MB | MD | MM | Panel Decision |
| 0062 | LATIN SMALL LETTER B | b | ḅ | 0253 | LATIN SMALL LETTER B WITH HOOK | 3 | 4 | 3 | 3 | 3 | 3 | 4 | Not a variant |
| | | ḃ | Ḅ | | | 3 | 4 | 2 | 3 | 3 | 3 | 3 | |
| | | ḅ | Ḇ | | | 3 | 4 | 3 | 4 | 3 | 3 | 4 | |
| 0107 | LATIN SMALL LETTER C WITH ACUTE | ċ | ċ | 010B | LATIN SMALL LETTER C WITH DOT ABOVE | 3 | 3 | 2 | 2 | 3 | 3 | 2 | Variant |
| | | ċ | ċ | | | 2 | 3 | 2 | 2 | 3 | 2 | 2 | |
| | | ċ | ċ | | | 3 | 3 | 2 | 2 | 3 | 3 | 3 | |
| 010F | LATIN SMALL LETTER D WITH CARON | ď | ď | 0257 | LATIN SMALL LETTER D WITH HOOK | 3 | 4 | 2 | 3 | 3 | 3 | 4 | Not a variant |
| | | ď | ď | | | 3 | 4 | 3 | 3 | 3 | 3 | 4 | |
| | | ď | ď | | | 3 | 4 | 3 | 3 | 3 | 3 | 3 | |
| 0111 | LATIN SMALL LETTER D WITH STROKE | ḏ | ḏ | 0257 | LATIN SMALL LETTER D WITH HOOK | 3 | 4 | 3 | 3 | 3 | 3 | 4 | Not a variant |
| | | ḏ | ḏ | | | 3 | 4 | 3 | 3 | 3 | 3 | 3 | |
| | | ḏ | ḏ | | | 3 | 4 | 2 | 3 | 3 | 3 | 2 | |
| 0067 + 0303 | LATIN SMALL LETTER G + COMBINING TILDE | ḡ | ḡ | 1E21 | LATIN SMALL LETTER G WITH MACRON | 2 | 3 | 2 | 2 | 3 | 2 | 2 | Variant |
| | | ḡ | ḡ | | | 2 | 3 | 2 | 2 | 3 | 2 | 1 | |
| | | ḡ | ḡ | | | 2 | 3 | 2 | 4 | 3 | 2 | 2 | |
| 0121 | LATIN SMALL LETTER G WITH DOT ABOVE | ḡ | ḡ | 0123 | LATIN SMALL LETTER G WITH CEDILLA | 2 | 3 | 2 | 2 | 3 | 2 | 2 | Variant |
| | | ḡ | ḡ | | | 2 | 3 | 2 | 2 | 3 | 2 | 2 | |
| | | ḡ | ḡ | | | 2 | 3 | 2 | 2 | 3 | 2 | 2 | |
| 011F | LATIN SMALL LETTER G WITH BREVE | ḡ | ḡ | 01E7 | LATIN SMALL LETTER G WITH CARON | 2 | 2 | 2 | 2 | 2 | 2 | 2 | Variant |
| | | ḡ | ḡ | | | 2 | 2 | 2 | 2 | 2 | 2 | 2 | |
| | | ḡ | ḡ | | | 2 | 3 | 2 | 2 | 3 | 2 | 2 | |
| 0068 | LATIN SMALL LETTER H | h | ḥ | 0127 | LATIN SMALL LETTER H WITH STROKE | 3 | 4 | 2 | 2 | 3 | 3 | 3 | Not a variant |
| | | h | ḥ | | | 3 | 4 | 3 | 3 | 3 | 3 | 3 | |
| | | h | ḥ | | | 3 | 4 | 2 | 3 | 3 | 2 | 2 | |
| 006A | LATIN SMALL LETTER J | j | ĵ | 0135 | LATIN SMALL LETTER J WITH CIRCUMFLEX | 3 | 4 | 3 | 2 | 3 | 3 | 4 | Not a variant |
| | | j | ĵ | | | 3 | 4 | 2 | 2 | 3 | 3 | 3 | |
| | | j | ĵ | | | 3 | 4 | 3 | 3 | 3 | 3 | 2 | |
| 006B | LATIN SMALL LETTER K | k | ḱ | 0199 | LATIN SMALL LETTER K WITH HOOK | 3 | 4 | 3 | 3 | 3 | 4 | 3 | Not a variant |
| | | k | ḱ | | | 3 | 4 | 2 | 2 | 3 | 4 | 2 | |
| | | k | ḱ | | | 3 | 4 | 2 | 2 | 3 | 4 | 2 | |
| 006B | LATIN SMALL LETTER K | k | ḱ | 01E9 | LATIN SMALL LETTER K WITH CARON | 3 | 4 | 3 | 4 | 4 | 4 | 4 | Not a variant |
| | | k | ḱ | | | 3 | 4 | 3 | 4 | 4 | 4 | 4 | |
| | | k | ḱ | | | 3 | 4 | 2 | 4 | 4 | 4 | 3 | |
| 006C | LATIN SMALL LETTER L | l | ĺ | 013A | LATIN SMALL LETTER L WITH ACUTE | 3 | 4 | 3 | 3 | 3 | 3 | 3 | Not a variant |
| | | l | ĺ | | | 3 | 4 | 3 | 3 | 3 | 2 | 2 | |
| | | l | ĺ | | | 3 | 4 | 3 | 3 | 3 | 3 | 3 | |
| 006C | LATIN SMALL LETTER L | l | ł | 0142 | LATIN SMALL LETTER L WITH STROKE | 3 | 4 | 2 | 3 | 3 | 3 | 3 | Not a variant |
| | | l | ł | | | 3 | 4 | 2 | 2 | 3 | 3 | 3 | |
| | | l | ł | | | 3 | 4 | 3 | 3 | 3 | 3 | 4 | |

| | | | | | | Inspectors | | | | | | | # Final |
|--------------------|---|-------|-------|--------------------|--------------------------------------|------------|----|----|----|----|----|----|--|
| Unicode Code Point | Name | Glyph | Glyph | Unicode Code Point | Name | MT | DT | BJ | HH | MB | MD | MM | Panel Decision |
| 013A | LATIN SMALL LETTER L WITH ACUTE | í | í | 013E | LATIN SMALL LETTER L WITH CARON | 3 | 4 | 3 | 4 | 3 | 4 | 4 | Not a variant |
| | | í | í | | | 3 | 4 | 3 | 3 | 3 | 4 | 3 | |
| | | í | í | | | 3 | 4 | 3 | 4 | 3 | 3 | 3 | |
| 0142 | LATIN SMALL LETTER L WITH STROKE | ł | ł | 0074 | LATIN SMALL LETTER T | 3 | 4 | 2 | 4 | 4 | 4 | 4 | Not a variant |
| | | ł | ł | | | 3 | 4 | 2 | 3 | 4 | 4 | 3 | |
| | | ł | ł | | | 3 | 4 | 4 | 4 | 4 | 4 | 4 | |
| 006E + 0304 | LATIN SMALL LETTER N + COMBINING MACRON | ñ | ñ | 00F1 | LATIN SMALL LETTER N WITH TILDE | 2 | 3 | 2 | 3 | 3 | 3 | 2 | Variant |
| | | ñ | ñ | | | 2 | 3 | 2 | 2 | 3 | 2 | 2 | |
| | | ñ | ñ | | | 2 | 3 | 2 | 4 | 3 | 2 | 2 | |
| 0144 | LATIN SMALL LETTER N WITH ACUTE | ñ | ñ | 1E45 | LATIN SMALL LETTER N WITH DOT ABOVE | | | | | | | | Variant (Acute and Dot Above of c and z are variants, the GP decided to also map n with Acute and n with Dot Above as variants for consistency.) |
| | | ñ | ñ | | | 2 | 3 | 2 | 3 | 3 | 3 | 3 | |
| | | ñ | ñ | | | 2 | 3 | 2 | 2 | 3 | 3 | 2 | |
| 0072 | LATIN SMALL LETTER R | ɾ | ɾ | 024D | LATIN SMALL LETTER R WITH STROKE | 3 | 4 | 2 | 3 | 3 | 3 | 3 | Not a variant |
| | | ɾ | ɾ | | | 3 | 4 | 2 | 2 | 3 | 3 | 2 | |
| | | ɾ | ɾ | | | 3 | 4 | 3 | 4 | 3 | 3 | 4 | |
| 0159 | LATIN SMALL LETTER R WITH CARON | ř | ř | 0072 + 0303 | LATIN SMALL LETTER R + | 3 | 4 | 3 | 3 | 3 | 3 | 3 | Not a variant |
| | | ř | ř | | | 3 | 4 | 3 | 2 | 3 | 3 | 2 | |
| | | ř | ř | | | 3 | 4 | 3 | 4 | 3 | 3 | 3 | |
| 0076 | LATIN SMALL LETTER V | v | v | 028B | LATIN SMALL LETTER V WITH HOOK | 3 | 4 | 3 | 3 | 3 | 4 | 3 | Not a variant |
| | | v | v | | | 3 | 4 | 3 | 4 | 3 | 4 | 3 | |
| | | v | v | | | 3 | 4 | 3 | 3 | 3 | 4 | 3 | |
| 0078 | LATIN SMALL LETTER X | x | x | 1E8D | LATIN SMALL LETTER X WITH DIAERESIS | 3 | 4 | 3 | 3 | 4 | 4 | 4 | Not a variant |
| | | x | x | | | 3 | 4 | 3 | 3 | 4 | 4 | 4 | |
| | | x | x | | | 3 | 4 | 2 | 3 | 4 | 4 | 4 | |
| 0079 | LATIN SMALL LETTER Y | y | y | 01B4 | LATIN SMALL LETTER Y WITH HOOK | 3 | 4 | 3 | 3 | 4 | 4 | 4 | Not a variant |
| | | y | y | | | 3 | 4 | 2 | 3 | 4 | 4 | 4 | |
| | | y | y | | | 3 | 4 | 2 | 3 | 4 | 4 | 3 | |
| 00FD | LATIN SMALL LETTER Y WITH ACUTE | ý | ý | 1EF7 | LATIN SMALL LETTER Y WITH HOOK ABOVE | 2 | 3 | 2 | 2 | 3 | 2 | 2 | Variant |
| | | ý | ý | | | 2 | 3 | 3 | 3 | 3 | 2 | 2 | |
| | | ý | ý | | | 2 | 3 | 2 | 2 | 3 | 2 | 2 | |
| 1EF3 | LATIN SMALL LETTER Y WITH GRAVE | ÿ | ÿ | 1EF7 | LATIN SMALL LETTER Y WITH HOOK ABOVE | 2 | 3 | 2 | 2 | 2 | 2 | 1 | Variant |
| | | ÿ | ÿ | | | 2 | 3 | 3 | 3 | 3 | 2 | 2 | |
| | | ÿ | ÿ | | | 2 | 3 | 2 | 2 | 3 | 2 | 2 | |
| 017A | LATIN SMALL LETTER Z WITH ACUTE | ž | ž | 017C | LATIN SMALL LETTER Z WITH DOT ABOVE | 2 | 3 | 2 | 2 | 3 | 3 | 1 | Variant |
| | | ž | ž | | | 2 | 3 | 2 | 2 | 2 | 3 | 1 | |
| | | ž | ž | | | 3 | 3 | 2 | 2 | 3 | 3 | 2 | |

D.3.13.2 Vowel 'a'

| Unicode Code Point | Name | Glyph | Glyph | Unicode Code Point | Name | Inspectors | | | | | | | # Final |
|-----------------------|--|-------|-------|-----------------------|--|------------|----|----|----|----|----|----|-------------------|
| | | | | | | MT | DT | BJ | HH | MB | MD | MM | Panel Decision |
| 00E0 | LATIN SMALL LETTER A WITH GRAVE | à | á | 00E1 | LATIN SMALL LETTER A WITH ACUTE | 3 | 3 | 2 | 3 | 3 | 3 | 3 | Not a variant |
| | | â | ã | | | 3 | 3 | 2 | 3 | 3 | 3 | 3 | |
| | | ä | å | | | 3 | 3 | 2 | 3 | 3 | 3 | 3 | |
| 00E0 | LATIN SMALL LETTER A WITH GRAVE | à | ă | 1EA3 | LATIN SMALL LETTER A WITH HOOK ABOVE | 3 | 3 | 2 | 2 | 2 | 2 | 2 | Variant |
| | | â | â | | | 3 | 3 | 3 | 3 | 3 | 2 | 3 | |
| | | ä | ä | | | 3 | 3 | 2 | 3 | 3 | 2 | 3 | |
| 00E1 | LATIN SMALL LETTER A WITH ACUTE | á | â | 1EA3 | LATIN SMALL LETTER A WITH HOOK ABOVE | 3 | 3 | 2 | 3 | 3 | 3 | 3 | Not a variant |
| | | â | â | | | 3 | 3 | 3 | 3 | 3 | 3 | 3 | |
| | | ä | ä | | | 3 | 3 | 3 | 3 | 3 | 3 | 3 | |
| 00E3 | LATIN SMALL LETTER A WITH TILDE | ã | ā | 0101 | LATIN SMALL LETTER A WITH MACRON | 3 | 3 | 2 | 3 | 3 | 3 | 2 | Variant |
| | | ä | ā | | | 3 | 3 | 2 | 2 | 2 | 2 | 2 | |
| | | ä | ä | | | 3 | 3 | 2 | 2 | 3 | 2 | 2 | |
| 00E5 | LATIN SMALL LETTER A WITH RING ABOVE | â | â | 1EA3 | LATIN SMALL LETTER A WITH HOOK ABOVE | 3 | 4 | 2 | 3 | 3 | 2 | 3 | Not a variant |
| | | â | â | | | 3 | 4 | 2 | 3 | 3 | 3 | 3 | |
| | | ä | ä | | | 3 | 4 | 3 | 3 | 3 | 2 | 2 | |
| 0103 | LATIN SMALL LETTER A WITH BREVE | ä | ä | 01CE | LATIN SMALL LETTER A WITH CARON | 2 | 2 | 2 | 2 | 2 | 2 | 2 | Variant |
| | | ä | ä | | | 2 | 2 | 2 | 2 | 2 | 2 | 2 | |
| | | ä | ä | | | 2 | 3 | 2 | 2 | 3 | 2 | 2 | |
| 1EA5 | LATIN SMALL LETTER A WITH CIRCUMFLEX | â | â | 1EA7 | LATIN SMALL LETTER A WITH CIRCUMFLEX | 3 | 3 | 2 | 2 | 3 | 2 | 3 | Not a variant |
| | | â | â | | | 3 | 3 | 2 | 2 | 3 | 3 | 2 | |
| | | ä | ä | | | 3 | 3 | 2 | 2 | 3 | 2 | 2 | |
| 1EA5 | LATIN SMALL LETTER A WITH CIRCUMFLEX | â | â | 1EA9 | LATIN SMALL LETTER A WITH CIRCUMFLEX | 3 | 3 | 2 | 2 | 3 | 2 | 3 | Not a variant |
| | | â | â | | | 3 | 3 | 2 | 2 | 3 | 2 | 2 | |
| | | ä | ä | | | 3 | 3 | 2 | 2 | 3 | 2 | 2 | |
| 1EA7 | LATIN SMALL LETTER A WITH CIRCUMFLEX | â | â | 1EA9 | LATIN SMALL LETTER A WITH CIRCUMFLEX | 3 | 3 | 2 | 2 | 3 | 2 | 2 | Not a variant |
| | | â | â | | | 3 | 3 | 3 | 2 | 3 | 2 | 2 | |
| | | ä | ä | | | 3 | 3 | 2 | 2 | 3 | 2 | 2 | |
| 1EAF | LATIN SMALL LETTER A WITH BREVE AND ACUTE | â | â | 1EB1 | LATIN SMALL LETTER A WITH BREVE AND GRAVE | 3 | 3 | 2 | 3 | 3 | 3 | 3 | Not a variant |
| | | â | â | | | 3 | 3 | 2 | 3 | 3 | 3 | 3 | |
| | | ä | ä | | | 3 | 3 | 2 | 3 | 3 | 3 | 2 | |
| 1EAF | LATIN SMALL LETTER A WITH BREVE AND ACUTE | â | â | 1EB3 | LATIN SMALL LETTER A WITH BREVE AND HOOK | 3 | 3 | 2 | 2 | 3 | 2 | 2 | Not a variant |
| | | â | â | | | 3 | 3 | 3 | 2 | 3 | 3 | 2 | |
| | | ä | ä | | | 3 | 3 | 3 | 2 | 3 | 3 | 2 | |
| 1EB1 | LATIN SMALL LETTER A WITH BREVE AND GRAVE | â | â | 1EB3 | LATIN SMALL LETTER A WITH BREVE AND HOOK | 3 | 3 | 3 | 3 | 3 | 2 | 3 | Not a variant |
| | | â | â | | | 3 | 3 | 3 | 3 | 3 | 2 | 2 | |
| | | ä | ä | | | 3 | 3 | 2 | 2 | 3 | 2 | 2 | |

D.3.13.3 Vowel 'e'

| | | | | | | Inspectors | | | | | | | # Final |
|--------------------|--|-------|-------|--------------------|--|------------|----|----|----|----|----|----|---|
| Unicode Code Point | Name | Glyph | Glyph | Unicode Code Point | Name | MT | DT | BJ | HH | MB | MD | MM | Panel Decision |
| 00E8 | LATIN SMALL LETTER E WITH GRAVE | è | é | 00E9 | LATIN SMALL LETTER E WITH ACUTE | 3 | 3 | 2 | 3 | 3 | 3 | 3 | Not a variant |
| | | è | é | | | 3 | 3 | 2 | 3 | 3 | 3 | 3 | |
| | | è | é | | | 3 | 3 | 2 | 3 | 3 | 3 | 3 | |
| 00E8 | LATIN SMALL LETTER E WITH GRAVE | è | é | 0117 | LATIN SMALL LETTER E WITH DOT ABOVE | 3 | 3 | 2 | 3 | 3 | 3 | 3 | Not a variant |
| | | è | é | | | 3 | 3 | 2 | 3 | 3 | 3 | 3 | |
| | | è | é | | | 3 | 3 | 2 | 3 | 3 | 3 | 3 | |
| 00E8 | LATIN SMALL LETTER E WITH GRAVE | è | é | 1EBB | LATIN SMALL LETTER E WITH HOOK ABOVE | 3 | 3 | 2 | 2 | 3 | 2 | 2 | Not a variant |
| | | è | é | | | 3 | 3 | 3 | 2 | 3 | 3 | 3 | |
| | | è | é | | | 3 | 3 | 2 | 2 | 3 | 2 | 2 | |
| 00E9 | LATIN SMALL LETTER E WITH ACUTE | é | è | 0117 | LATIN SMALL LETTER E WITH DOT ABOVE | 3 | 3 | 2 | 3 | 3 | 3 | 3 | Not a variant |
| | | é | è | | | 3 | 3 | 2 | 3 | 3 | 3 | 3 | |
| | | é | è | | | 3 | 3 | 2 | 3 | 3 | 3 | 3 | |
| 00E9 | LATIN SMALL LETTER E WITH ACUTE | é | è | 1EBB | LATIN SMALL LETTER E WITH HOOK ABOVE | 3 | 3 | 2 | 3 | 3 | 2 | 2 | Not a variant |
| | | é | è | | | 3 | 3 | 3 | 3 | 3 | 3 | 3 | |
| | | é | è | | | 3 | 3 | 2 | 3 | 3 | 3 | 3 | |
| 0113 | LATIN SMALL LETTER E WITH MACRON | ē | ē | 1EBD | LATIN SMALL LETTER E WITH TILDE | | | | | | | | Variant (Tilde and Macron of a i o u g n are variants, the GP decided to also map e with Tilde and e with Macron as variants for consistency.) |
| | | ē | ē | | | 3 | 3 | 2 | 2 | 3 | 3 | 2 | |
| | | ē | ē | | | 3 | 3 | 2 | 2 | 2 | 2 | 3 | |
| 0115 | LATIN SMALL LETTER E WITH BREVE | ĕ | ĕ | 011B | LATIN SMALL LETTER E WITH CARON | | | | | | | | Variant |
| | | ĕ | ĕ | | | 3 | 3 | 2 | 2 | 3 | 2 | 2 | |
| | | ĕ | ĕ | | | 2 | 2 | 2 | 2 | 2 | 2 | 2 | |
| 0117 | LATIN SMALL LETTER E WITH DOT ABOVE | ë | ë | 1EBB | LATIN SMALL LETTER E WITH HOOK ABOVE | 3 | 3 | 2 | 3 | 3 | 2 | 2 | Not a variant |
| | | ë | ë | | | 3 | 3 | 3 | 3 | 3 | 3 | 2 | |
| | | ë | ë | | | 3 | 3 | 2 | 3 | 3 | 2 | 3 | |
| 1EB9 + 0300 | LATIN SMALL LETTER E WITH DOT BELOW + COMBINING GRAVE ACCENT | ẽ | ẽ | 1EB9 + 0301 | LATIN SMALL LETTER E WITH DOT BELOW + COMBINING ACUTE ACCENT | 3 | 3 | 2 | 3 | 3 | 3 | 3 | Not a variant |
| | | ẽ | ẽ | | | 3 | 3 | 2 | 3 | 3 | 3 | 3 | |
| | | ẽ | ẽ | | | 3 | 3 | 2 | 3 | 3 | 3 | 3 | |
| 1EBF | LATIN SMALL LETTER E WITH CIRCUMFLEX AND ACUTE | ê | ê | 1EC1 | LATIN SMALL LETTER E WITH CIRCUMFLEX AND GRAVE | 3 | 3 | 2 | 3 | 3 | 3 | 3 | Not a variant |
| | | ê | ê | | | 3 | 3 | 3 | 3 | 3 | 3 | 3 | |
| | | ê | ê | | | 3 | 3 | 3 | 3 | 3 | 2 | 2 | |
| 1EBF | LATIN SMALL LETTER E WITH CIRCUMFLEX AND ACUTE | ê | ê | 1EC3 | LATIN SMALL LETTER E WITH CIRCUMFLEX AND HOOK ABOVE | 3 | 3 | 2 | 2 | 3 | 2 | 3 | Not a variant |
| | | ê | ê | | | 3 | 3 | 3 | 2 | 3 | 3 | 3 | |
| | | ê | ê | | | 3 | 3 | 2 | 2 | 3 | 2 | 2 | |
| 1EC1 | LATIN SMALL LETTER E WITH CIRCUMFLEX AND GRAVE | ê | ê | 1EC3 | LATIN SMALL LETTER E WITH CIRCUMFLEX AND HOOK ABOVE | 3 | 3 | 2 | 2 | 3 | 2 | 2 | Not a variant |
| | | ê | ê | | | 3 | 3 | 3 | 2 | 3 | 3 | 2 | |
| | | ê | ê | | | 3 | 3 | 2 | 3 | 3 | 2 | 2 | |

D.3.13.4 Vowel 'i'

| | | | | | | Inspectors | | | | | | | # Final |
|--------------------|----------------------------------|-------|-------|--------------------|--|------------|----|----|----|----|----|----|----------------|
| Unicode Code Point | Name | Glyph | Glyph | Unicode Code Point | Name | MT | DT | BJ | HH | MB | MD | MM | Panel Decision |
| 0069 | LATIN SMALL LETTER I | í | í | 00EC | LATIN SMALL LETTER I WITH GRAVE | 2 | 3 | 2 | 3 | 3 | 3 | 3 | Not a variant |
| | | í | í | | | 2 | 3 | 2 | 3 | 3 | 3 | 3 | |
| | | í | í | | | 2 | 3 | 2 | 3 | 3 | 3 | 3 | |
| 0131 | LATIN SMALL LETTER DOTLESS I | ı | ı | 0269 | LATIN SMALL LETTER IOTA | 3 | 2 | 2 | 2 | 3 | 3 | 2 | Variant |
| | | ı | ı | | | 3 | 2 | 2 | 2 | 3 | 1 | 1 | |
| | | ı | ı | | | 3 | 3 | 3 | 3 | 3 | 3 | 3 | |
| 0069 | LATIN SMALL LETTER I | ï | ï | 00ED | LATIN SMALL LETTER I WITH ACUTE | 3 | 3 | 2 | 3 | 3 | 3 | 3 | Not a variant |
| | | ï | ï | | | 3 | 3 | 2 | 3 | 3 | 3 | 3 | |
| | | ï | ï | | | 3 | 3 | 2 | 3 | 3 | 3 | 3 | |
| 0069 | LATIN SMALL LETTER I | İ | İ | 0268 | LATIN SMALL LETTER I WITH STROKE | 3 | 4 | 2 | 3 | 3 | 3 | 4 | Not a variant |
| | | İ | İ | | | 3 | 4 | 2 | 2 | 3 | 3 | 3 | |
| | | İ | İ | | | 3 | 4 | 3 | 3 | 3 | 3 | 4 | |
| 0069 | LATIN SMALL LETTER I | ı̇ | ı̇ | 0269 | LATIN SMALL LETTER IOTA | 3 | 3 | 2 | 3 | 3 | 3 | 3 | Not a variant |
| | | ı̇ | ı̇ | | | 3 | 3 | 3 | 3 | 3 | 3 | 3 | |
| | | ı̇ | ı̇ | | | 3 | 3 | 3 | 4 | 3 | 3 | 3 | |
| 0069 | LATIN SMALL LETTER I | İ̇ | İ̇ | 1EC9 | LATIN SMALL LETTER I WITH HOOK | 2 | 3 | 2 | 3 | 3 | 2 | 2 | Variant |
| | | İ̇ | İ̇ | | | 3 | 3 | 3 | 3 | 3 | 3 | 3 | |
| | | İ̇ | İ̇ | | | 2 | 3 | 2 | 2 | 3 | 2 | 2 | |
| 00EC | LATIN SMALL LETTER I WITH GRAVE | ï | ï | 00ED | LATIN SMALL LETTER I WITH ACUTE | 2 | 3 | 2 | 2 | 3 | 3 | 3 | Not a variant |
| | | ï | ï | | | 2 | 3 | 2 | 2 | 3 | 3 | 3 | |
| | | ï | ï | | | 2 | 3 | 3 | 3 | 3 | 3 | 3 | |
| 00EC | LATIN SMALL LETTER I WITH GRAVE | İ | İ | 0268 | LATIN SMALL LETTER I WITH STROKE | 3 | 4 | 2 | 3 | 3 | 3 | 4 | Not a variant |
| | | İ | İ | | | 3 | 4 | 2 | 2 | 3 | 3 | 3 | |
| | | İ | İ | | | 3 | 4 | 3 | 3 | 3 | 3 | 4 | |
| 00EC | LATIN SMALL LETTER I WITH GRAVE | ı̇ | ı̇ | 0269 | LATIN SMALL LETTER IOTA | 3 | 4 | 3 | 3 | 3 | 3 | 4 | Not a variant |
| | | ı̇ | ı̇ | | | 3 | 4 | 3 | 3 | 3 | 3 | 4 | |
| | | ı̇ | ı̇ | | | 3 | 4 | 4 | 4 | 3 | 3 | 3 | |
| 00EC | LATIN SMALL LETTER I WITH GRAVE | İ̇ | İ̇ | 1EC9 | LATIN SMALL LETTER I WITH HOOK ABOVE | 2 | 3 | 2 | 2 | 3 | 3 | 2 | Not a variant |
| | | İ̇ | İ̇ | | | 3 | 3 | 3 | 2 | 3 | 2 | 2 | |
| | | İ̇ | İ̇ | | | 2 | 3 | 2 | 2 | 3 | 3 | 2 | |
| 0129 | LATIN SMALL LETTER I WITH TILDE | ĩ | ĩ | 0268 + 0303 | LATIN SMALL LETTER I WITH STROKE + COMBINING TILDE | 3 | 4 | 2 | 3 | 3 | 3 | 3 | Not a variant |
| | | ĩ | ĩ | | | 3 | 4 | 2 | 3 | 3 | 3 | 2 | |
| | | ĩ | ĩ | | | 3 | 4 | 3 | 4 | 3 | 3 | 3 | |
| 0129 | LATIN SMALL LETTER I WITH TILDE | İ̃ | İ̃ | 012B | LATIN SMALL LETTER I WITH MACRON | 2 | 3 | 2 | 3 | 3 | 3 | 3 | Variant |
| | | İ̃ | İ̃ | | | 2 | 3 | 2 | 3 | 2 | 2 | 2 | |
| | | İ̃ | İ̃ | | | 2 | 3 | 2 | 2 | 3 | 2 | 2 | |
| 012B | LATIN SMALL LETTER I WITH MACRON | İ̄ | İ̄ | 0268 + 0303 | LATIN SMALL LETTER I WITH STROKE + | 2 | 4 | 2 | 3 | 3 | 3 | 3 | Not a variant |
| | | İ̄ | İ̄ | | | 3 | 4 | 2 | 2 | 3 | 3 | 3 | |
| | | İ̄ | İ̄ | | | 3 | 4 | 3 | 4 | 3 | 3 | 3 | |
| 0268 | LATIN SMALL LETTER I WITH STROKE | ı̸ | ı̸ | 1EC9 | LATIN SMALL LETTER I WITH HOOK ABOVE | 3 | 4 | 2 | 4 | 3 | 3 | 4 | Not a variant |
| | | ı̸ | ı̸ | | | 3 | 4 | 3 | 3 | 3 | 3 | 3 | |
| | | ı̸ | ı̸ | | | 3 | 4 | 3 | 4 | 3 | 3 | 4 | |

D.3.13.5 Vowel 'o'

| | | | | | | Inspectors | | | | | | | # Final |
|--------------------|--|-------|-------|--------------------|---|------------|----|----|----|----|----|----|----------------|
| Unicode Code Point | Name | Glyph | Glyph | Unicode Code Point | Name | MT | DT | BJ | HH | MB | MD | MM | Panel Decision |
| 00F0 | LATIN SMALL LETTER ETH | ð | ð | 01D2 | LATIN SMALL LETTER O WITH CARON | 3 | 4 | 2 | 3 | 3 | 3 | 4 | Not a variant |
| | | ð | ð | | | 3 | 4 | 2 | 2 | 3 | 2 | 3 | |
| | | ð | ð | | | 3 | 4 | 2 | 3 | 3 | 3 | 3 | |
| 00F2 | LATIN SMALL LETTER O WITH GRAVE | ò | ó | 00F3 | LATIN SMALL LETTER O WITH ACUTE | 3 | 3 | 2 | 3 | 3 | 3 | 3 | Not a variant |
| | | ò | ó | | | 3 | 3 | 2 | 2 | 3 | 3 | 3 | |
| | | ò | ó | | | 3 | 3 | 2 | 3 | 3 | 3 | 3 | |
| 00F2 | LATIN SMALL LETTER O WITH GRAVE | ò | ó | 1ECF | LATIN SMALL LETTER O WITH HOOK ABOVE | 2 | 3 | 2 | 2 | 3 | 3 | 2 | Variant |
| | | ò | ó | | | 3 | 3 | 3 | 3 | 3 | 3 | 3 | |
| | | ò | ó | | | 3 | 3 | 2 | 2 | 3 | 2 | 2 | |
| 00F3 | LATIN SMALL LETTER O WITH ACUTE | ó | ó | 1ECF | LATIN SMALL LETTER O WITH HOOK ABOVE | 2 | 3 | 2 | 3 | 3 | 3 | 2 | Not a variant |
| | | ó | ó | | | 3 | 3 | 3 | 3 | 3 | 3 | 3 | |
| | | ó | ó | | | 2 | 3 | 2 | 3 | 3 | 3 | 2 | |
| 00F5 | LATIN SMALL LETTER O WITH TILDE | õ | õ | 014D | LATIN SMALL LETTER O WITH MACRON | 2 | 3 | 2 | 3 | 3 | 3 | 3 | Variant |
| | | õ | õ | | | 2 | 3 | 2 | 3 | 2 | 2 | 2 | |
| | | õ | õ | | | 2 | 2 | 2 | 2 | 3 | 2 | 2 | |
| 00F6 | LATIN SMALL LETTER O WITH DIAERESIS | ö | ö | 0151 | LATIN SMALL LETTER O WITH DOUBLE ACUTE | 3 | 3 | 2 | 3 | 3 | 2 | 3 | Not a variant |
| | | ö | ö | | | 3 | 3 | 2 | 3 | 3 | 2 | 2 | |
| | | ö | ö | | | 3 | 3 | 3 | 3 | 3 | 3 | 3 | |
| 1ED1 | LATIN SMALL LETTER O WITH CIRCUMFLEX AND ACUTE | ô | ô | 1ED3 | LATIN SMALL LETTER O WITH CIRCUMFLEX AND GRAVE | 2 | 3 | 2 | 2 | 3 | 3 | 3 | Not a variant* |
| | | ô | ô | | | 2 | 3 | 2 | 2 | 3 | 3 | 3 | |
| | | ô | ô | | | 2 | 3 | 2 | 2 | 3 | 2 | 2 | |
| 1ED1 | LATIN SMALL LETTER O WITH CIRCUMFLEX AND ACUTE | ô | ô | 1ED5 | LATIN SMALL LETTER O WITH CIRCUMFLEX AND HOOK ABOVE | 2 | 3 | 2 | 2 | 3 | 2 | 3 | Not a variant* |
| | | ô | ô | | | 2 | 3 | 2 | 2 | 3 | 3 | 2 | |
| | | ô | ô | | | 2 | 3 | 2 | 2 | 3 | 2 | 2 | |
| 1ED3 | LATIN SMALL LETTER O WITH CIRCUMFLEX AND GRAVE | ô | ô | 1ED5 | LATIN SMALL LETTER O WITH CIRCUMFLEX AND HOOK ABOVE | 2 | 3 | 2 | 2 | 3 | 2 | 2 | Not a variant* |
| | | ô | ô | | | 2 | 3 | 2 | 2 | 3 | 2 | 3 | |
| | | ô | ô | | | 2 | 2 | 2 | 2 | 3 | 2 | 2 | |
| 1EDB | LATIN SMALL LETTER O WITH HORN AND ACUTE | ô | ô | 1EDD | LATIN SMALL LETTER O WITH HORN AND GRAVE | 3 | 3 | 2 | 3 | 3 | 3 | 3 | Not a variant |
| | | ô | ô | | | 3 | 3 | 2 | 3 | 3 | 3 | 3 | |
| | | ô | ô | | | 3 | 3 | 2 | 3 | 3 | 3 | 3 | |
| 1EDB | LATIN SMALL LETTER O WITH HORN AND ACUTE | ô | ô | 1EDF | LATIN SMALL LETTER O WITH HORN AND HOOK ABOVE | 3 | 3 | 2 | 3 | 3 | 3 | 3 | Not a variant |
| | | ô | ô | | | 3 | 3 | 2 | 3 | 3 | 3 | 3 | |
| | | ô | ô | | | 3 | 3 | 2 | 3 | 3 | 3 | 2 | |
| 1EDD | LATIN SMALL LETTER O WITH HORN AND GRAVE | ô | ô | 1EDF | LATIN SMALL LETTER O WITH HORN AND HOOK ABOVE | 2 | 3 | 2 | 2 | 3 | 2 | 2 | Not a variant* |
| | | ô | ô | | | 3 | 3 | 3 | 3 | 3 | 3 | 3 | |
| | | ô | ô | | | 3 | 3 | 2 | 2 | 3 | 2 | 2 | |

* These are used in Vietnamese and Vietnamese users can distinguish these code points

D.3.13.6 Vowel 'u'

| | | | | | | Inspectors | | | | | | | # Final |
|--------------------|--|-------|-------|--------------------|---|------------|----|----|----|-----|-----|----|----------------|
| Unicode Code Point | Name | Glyph | Glyph | Unicode Code Point | Name | MT | DT | BJ | HH | M B | M D | MM | Panel Decision |
| 00F9 | LATIN SMALL LETTER U WITH GRAVE | ù | ú | 00FA | LATIN SMALL LETTER U WITH ACUTE | 3 | 3 | 2 | 3 | 3 | 3 | 4 | Not a variant |
| | | û | ü | | | 3 | 3 | 2 | 3 | 3 | 3 | 4 | |
| | | ü | ü | | | 3 | 3 | 2 | 3 | 3 | 3 | 4 | |
| 00F9 | LATIN SMALL LETTER U WITH GRAVE | ù | ú | 1EE7 | LATIN SMALL LETTER U WITH HOOK ABOVE | 2 | 3 | 2 | 2 | 2 | 2 | 3 | Variant |
| | | û | ü | | | 2 | 3 | 3 | 2 | 3 | 3 | 2 | |
| | | ü | ü | | | 2 | 3 | 2 | 2 | 3 | 3 | 2 | |
| 00FA | LATIN SMALL LETTER U WITH ACUTE | ù | ú | 1EE7 | LATIN SMALL LETTER U WITH HOOK ABOVE | 3 | 3 | 3 | 3 | 3 | 3 | 3 | Not a variant |
| | | û | ü | | | 2 | 3 | 3 | 3 | 3 | 3 | 3 | |
| | | ü | ü | | | 3 | 3 | 3 | 3 | 3 | 3 | 2 | |
| 00FC | LATIN SMALL LETTER U WITH DIAERESIS | ü | ü | 0171 | LATIN SMALL LETTER U WITH DOUBLE ACUTE | 3 | 3 | 2 | 3 | 3 | 2 | 3 | Not a variant |
| | | ü | ü | | | 3 | 3 | 2 | 3 | 3 | 2 | 2 | |
| | | ü | ü | | | 3 | 3 | 3 | 3 | 3 | 3 | 3 | |
| 0169 | LATIN SMALL LETTER U WITH TILDE | ũ | ũ | 016B | LATIN SMALL LETTER U WITH MACRON | 3 | 3 | 2 | 3 | 3 | 3 | 2 | Variant |
| | | ũ | ũ | | | 2 | 3 | 2 | 3 | 2 | 3 | 2 | |
| | | ũ | ũ | | | 2 | 2 | 2 | 2 | 3 | 2 | 2 | |
| 016D | LATIN SMALL LETTER U WITH BREVE | ũ | ũ | 01D4 | LATIN SMALL LETTER U WITH CARON | 2 | 2 | 2 | 2 | 2 | 2 | 1 | Variant |
| | | ũ | ũ | | | 2 | 3 | 2 | 2 | 2 | 2 | 1 | |
| | | ũ | ũ | | | 2 | 3 | 2 | 2 | 3 | 2 | 1 | |
| 016F | LATIN SMALL LETTER U WITH RING ABOVE | û | û | 1EE7 | LATIN SMALL LETTER U WITH HOOK ABOVE | 2 | 4 | 2 | 2 | 3 | 2 | 3 | Not a variant |
| | | û | û | | | 2 | 4 | 3 | 2 | 3 | 3 | 2 | |
| | | û | û | | | 3 | 4 | 3 | 3 | 3 | 2 | 3 | |
| 1EE9 | LATIN SMALL LETTER U WITH HORN AND ACUTE | ú | ú | 1EEB | LATIN SMALL LETTER U WITH HORN AND GRAVE | 2 | 3 | 2 | 3 | 3 | 3 | 3 | Not a variant |
| | | ú | ú | | | 3 | 3 | 2 | 3 | 3 | 3 | 3 | |
| | | ú | ú | | | 3 | 3 | 3 | 3 | 3 | 3 | 3 | |
| 00FA | LATIN SMALL LETTER U WITH ACUTE | ù | ú | 1EE9 | LATIN SMALL LETTER U WITH HORN AND ACUTE | 3 | 4 | 2 | 3 | 3 | 3 | 4 | Not a variant |
| | | û | ú | | | 3 | 4 | 4 | 3 | 3 | 4 | 4 | |
| | | ü | ü | | | 3 | 4 | 2 | 2 | 3 | 3 | 2 | |
| 1EE9 | LATIN SMALL LETTER U WITH HORN AND ACUTE | ú | ú | 1EED | LATIN SMALL LETTER U WITH HORN AND HOOK ABOVE | 3 | 3 | 2 | 3 | 3 | 3 | 3 | Not a variant |
| | | ú | ú | | | 3 | 3 | 3 | 3 | 3 | 3 | 3 | |
| | | ú | ú | | | 3 | 3 | 2 | 3 | 3 | 3 | 3 | |
| 1EEB | LATIN SMALL LETTER U WITH HORN AND GRAVE | ú | ú | 1EED | LATIN SMALL LETTER U WITH HORN AND HOOK ABOVE | 2 | 3 | 2 | 2 | 2 | 3 | 2 | Variant |
| | | ú | ú | | | 3 | 3 | 3 | 3 | 3 | 3 | 3 | |
| | | ú | ú | | | 2 | 3 | 2 | 2 | 3 | 2 | 2 | |